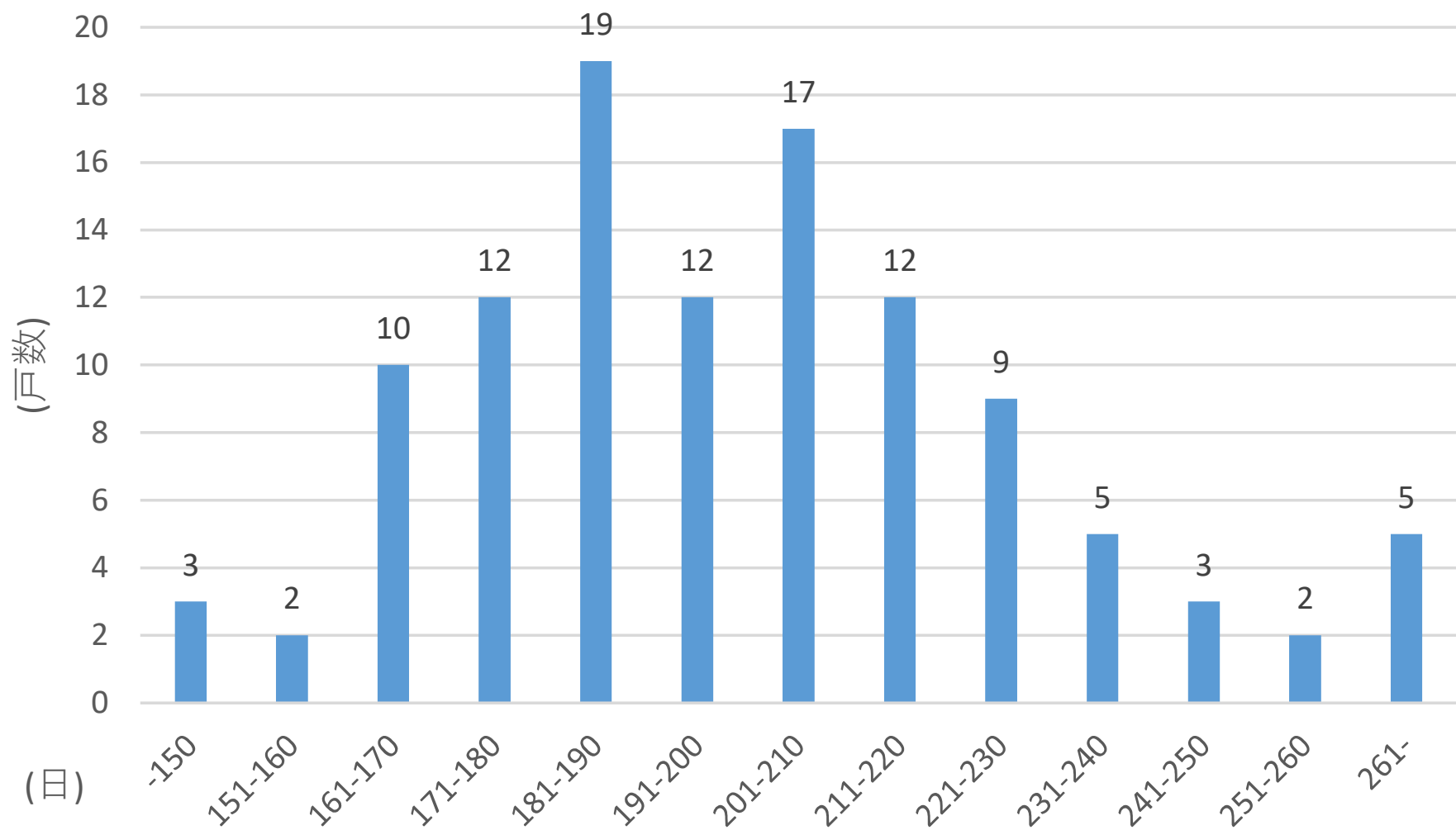
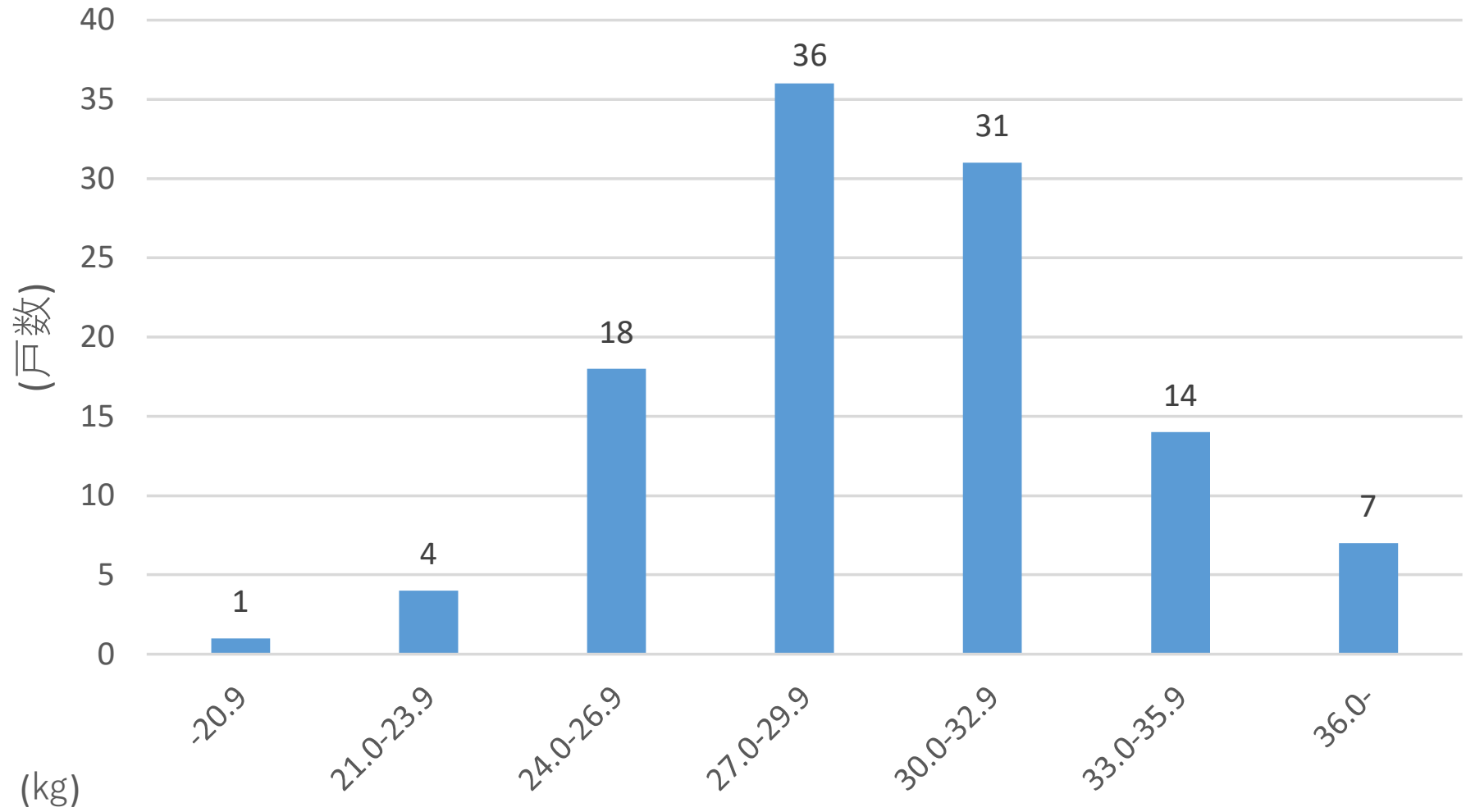


県内牛群検定農家項目別分布戸数 (2023年4月成績)

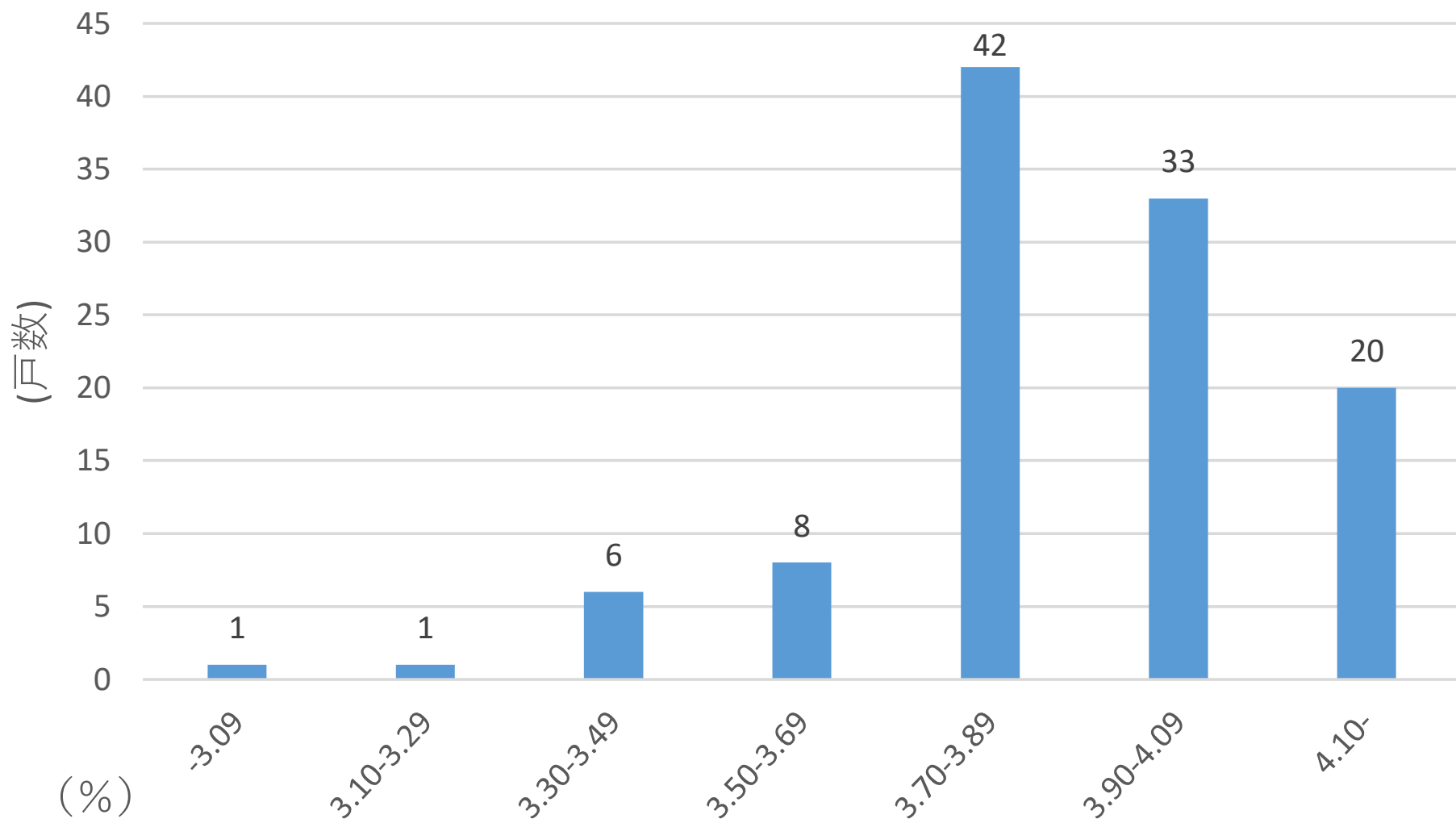
平均搾乳日数



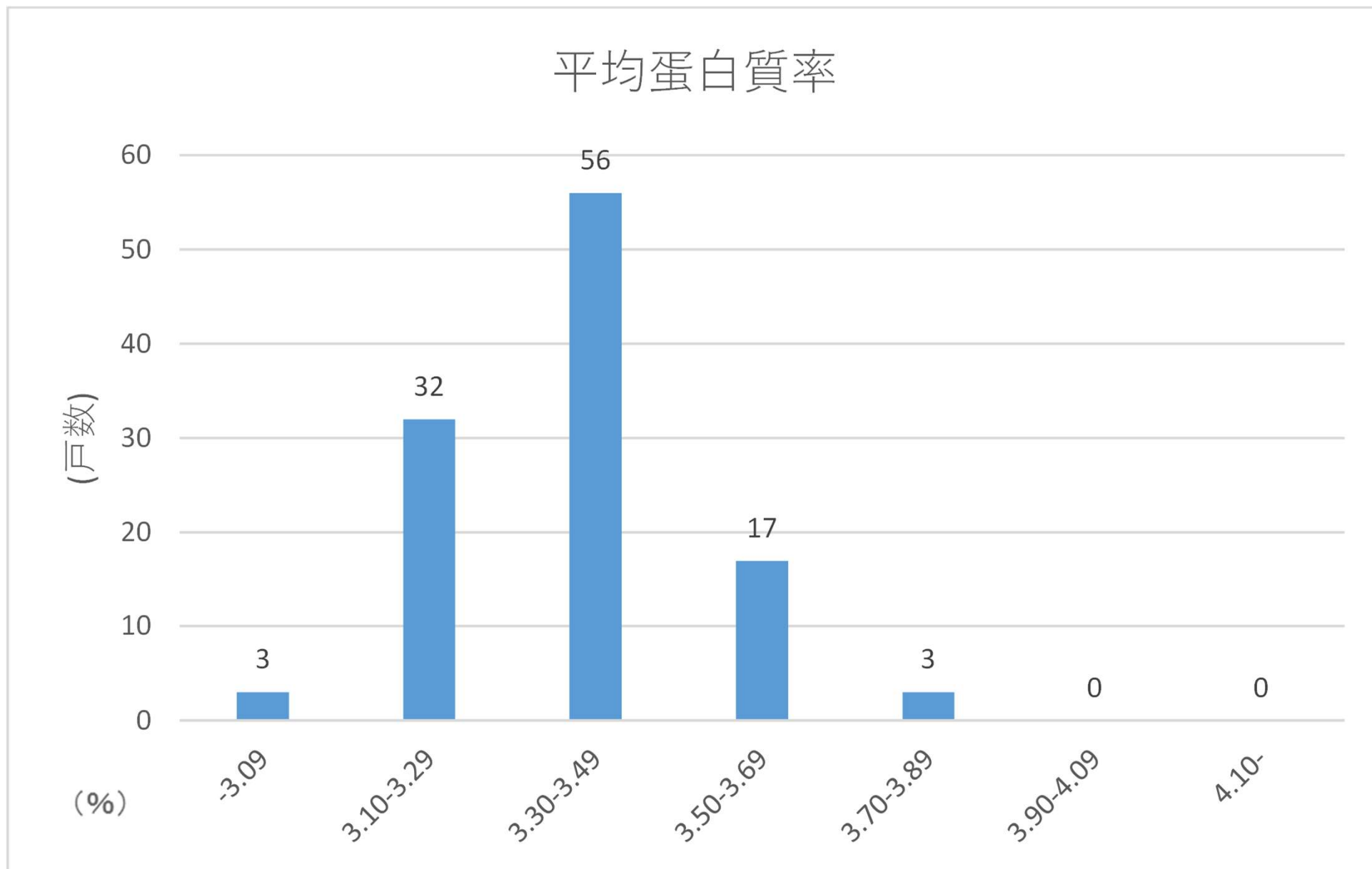
搾乳牛1日1頭当り乳量



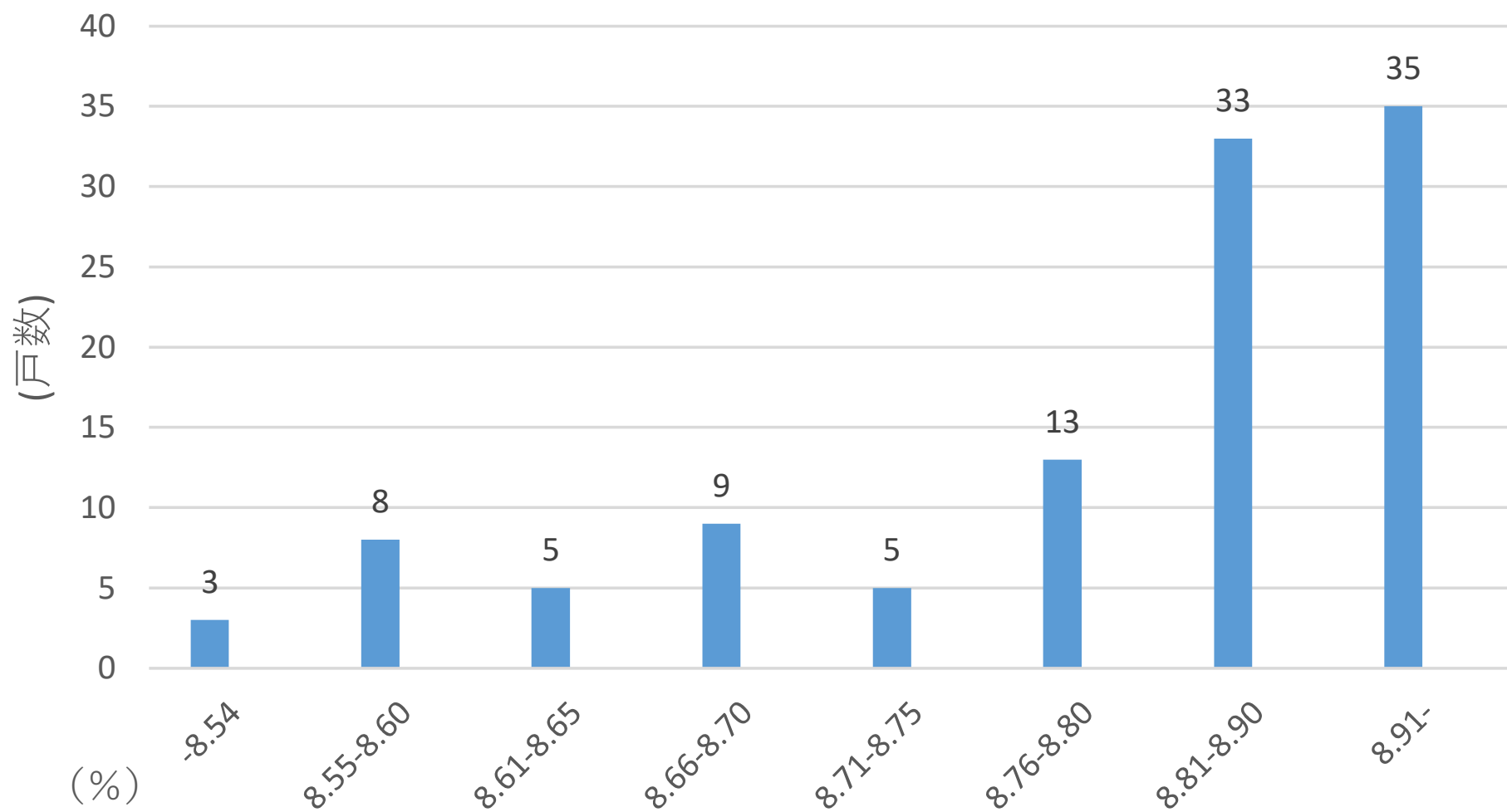
平均乳脂率



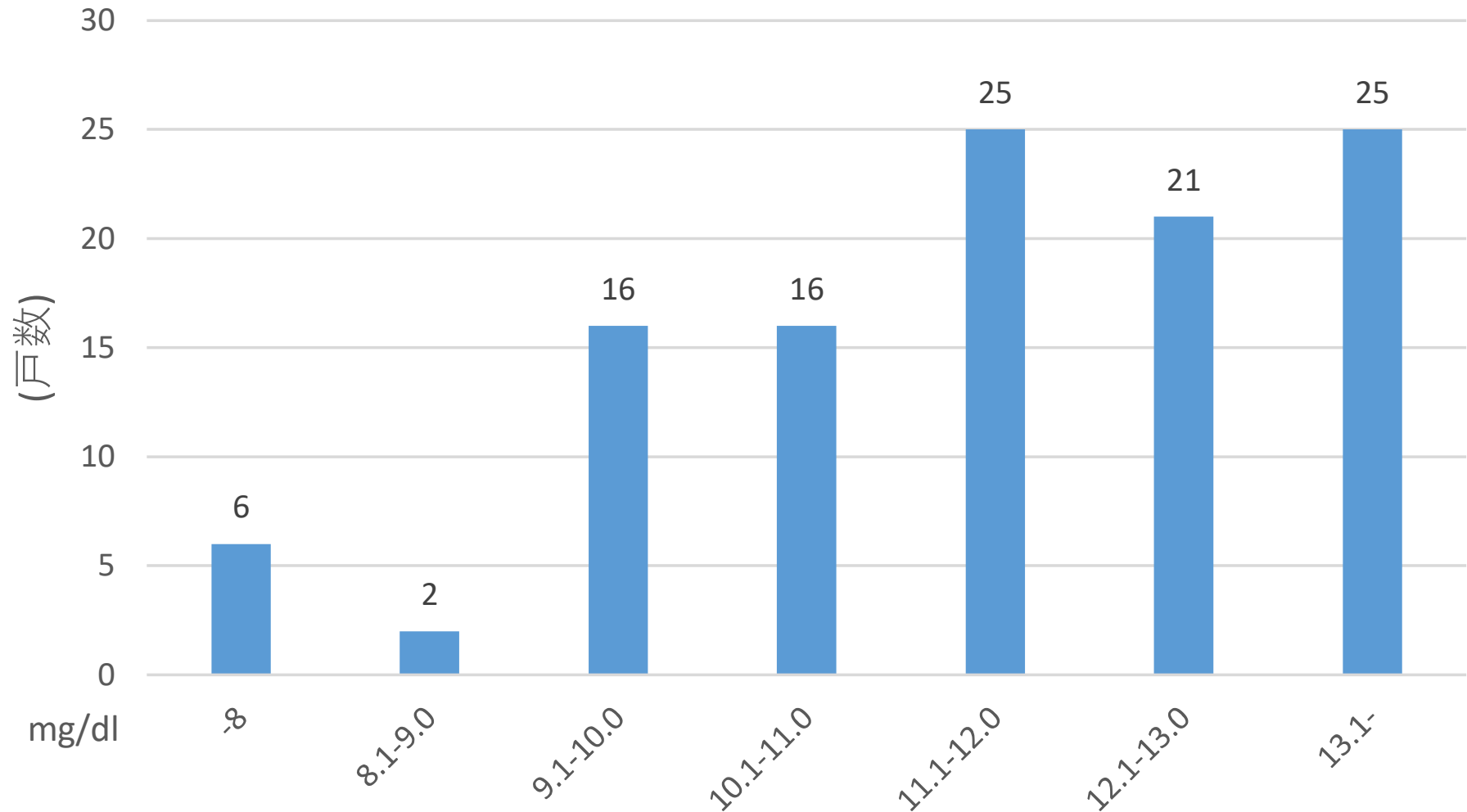
平均蛋白質率



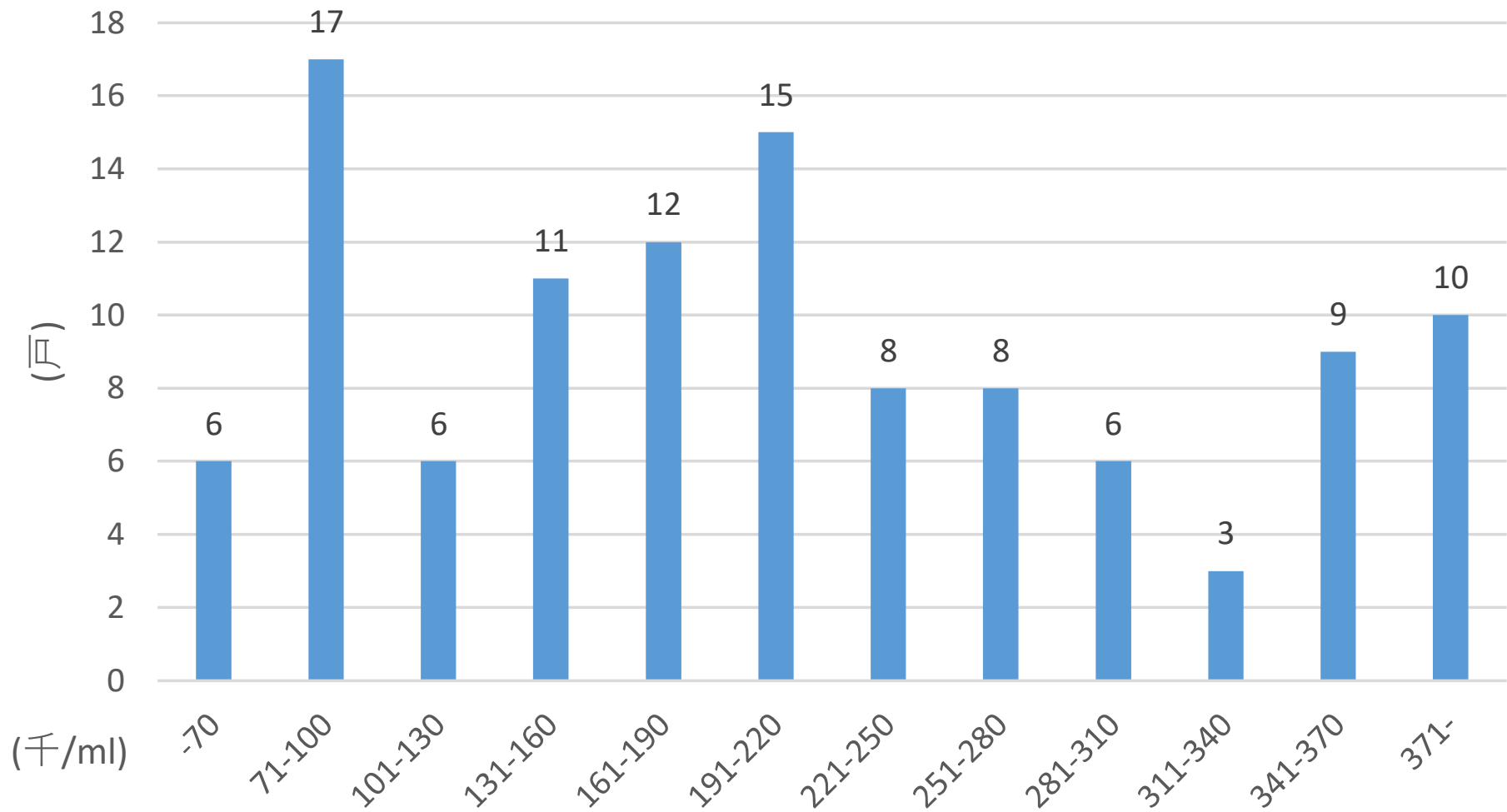
平均無脂固形分率



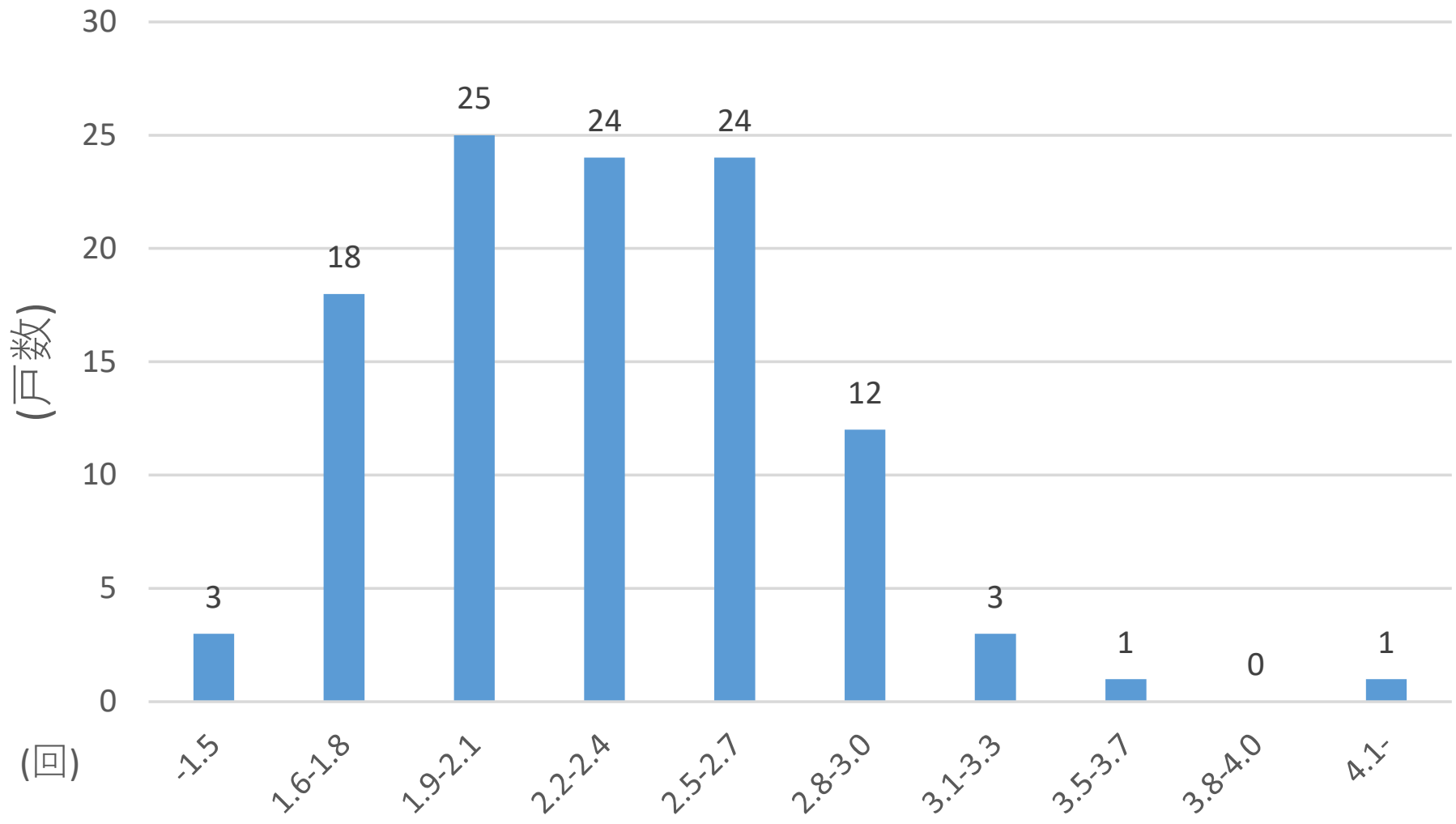
乳中尿素窒素



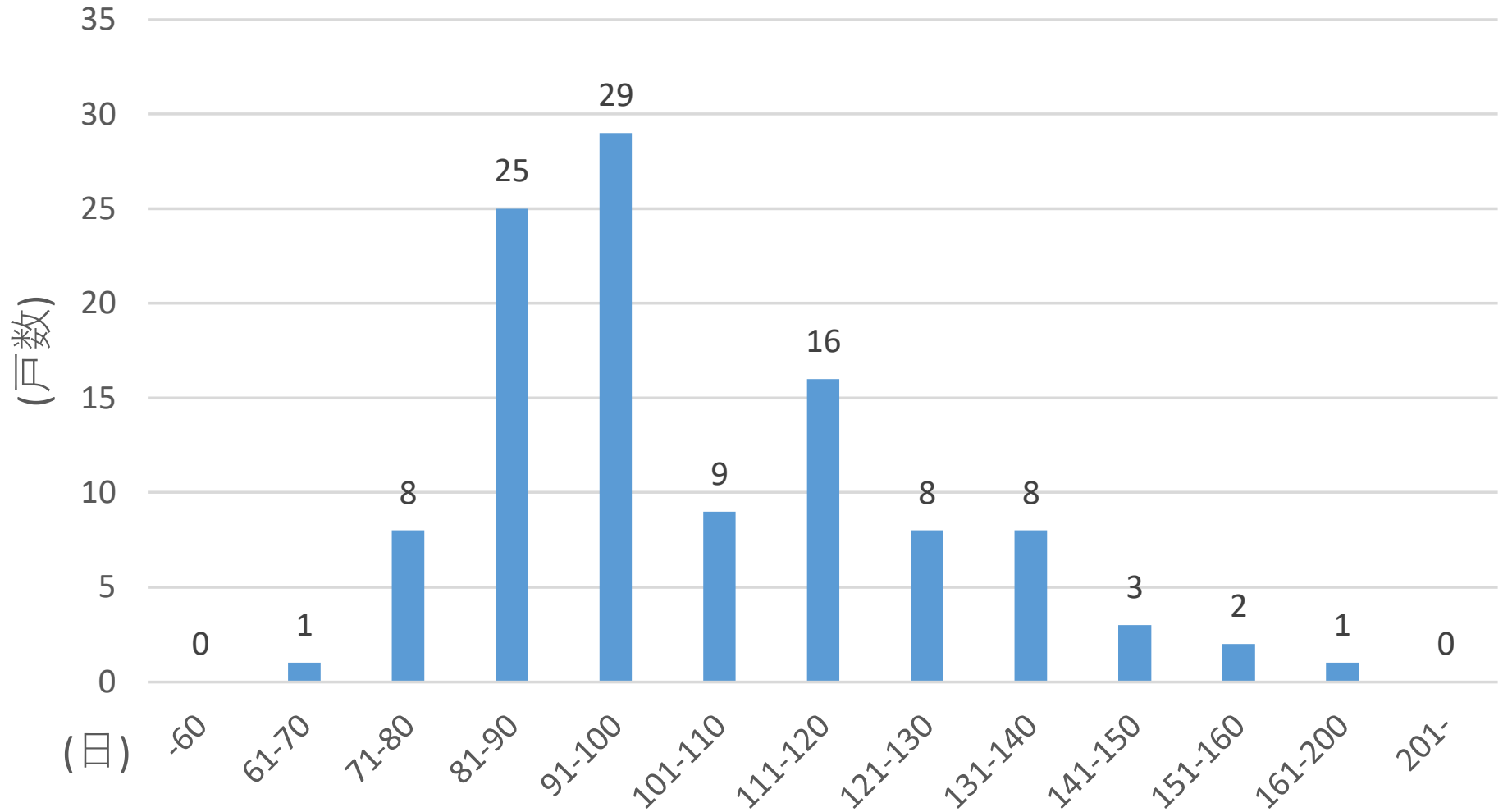
体細胞数平均(千/ml)



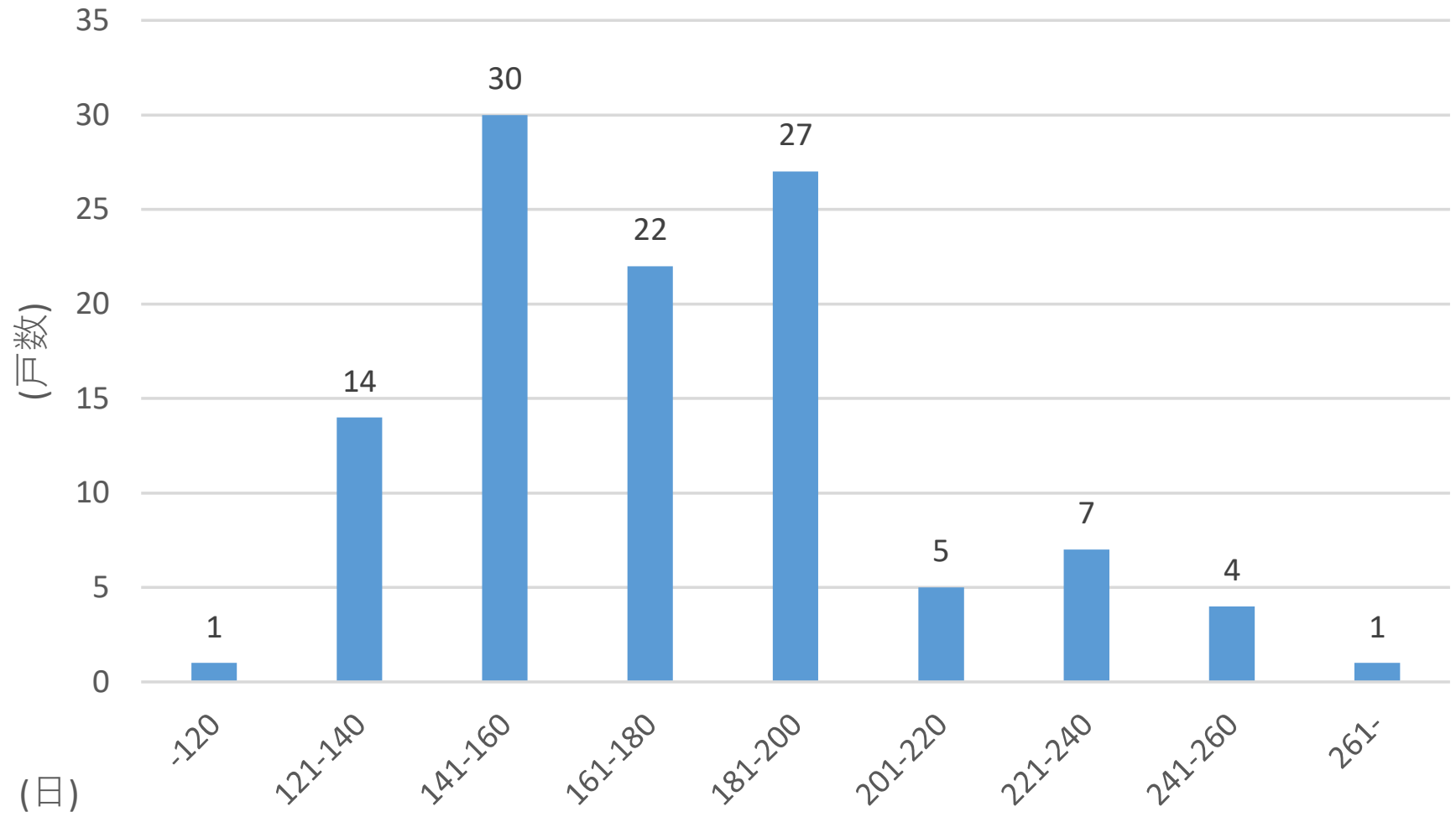
授精回数



分娩後初回授精日数



空胎日数



分娩間隔

