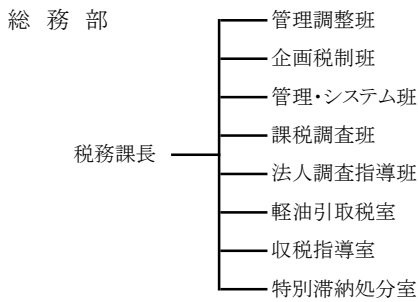


1. 税務機関組織図

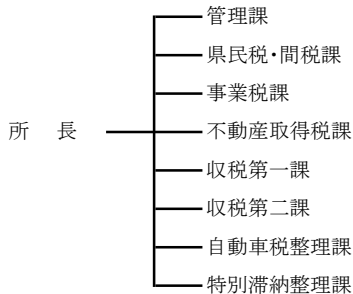
(平成30年11月1日現在)

(1) 本庁

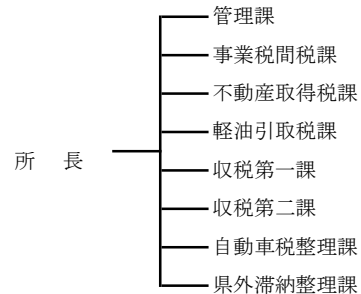


(2) 出先機関

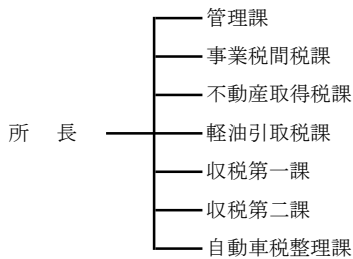
① 中央県税事務所



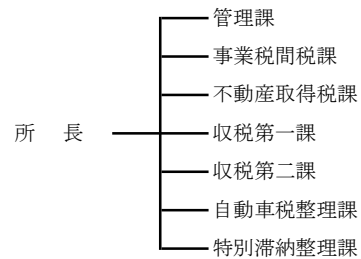
④ 松戸県税事務所



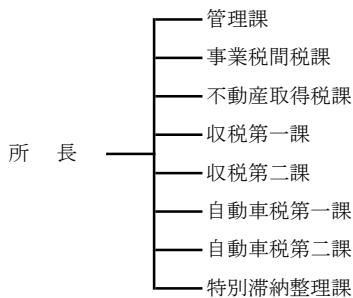
② 千葉西県税事務所



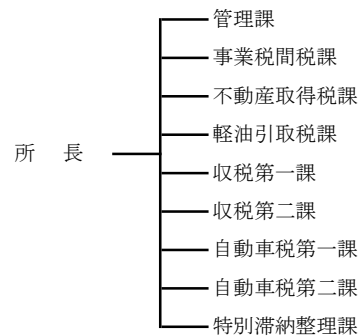
⑤ 柏県税事務所



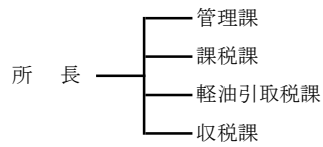
③ 船橋県税事務所



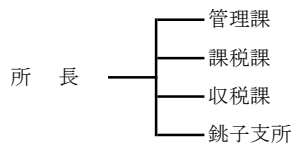
⑥ 佐倉県税事務所



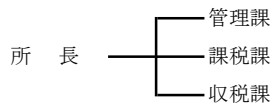
⑦香取県税事務所



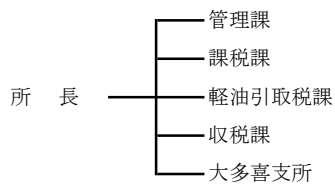
⑧旭県税事務所



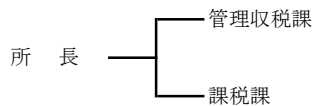
⑨東金県税事務所



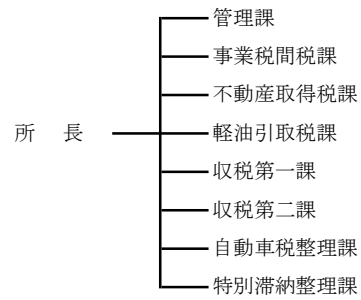
⑩茂原県税事務所



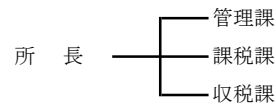
⑪館山県税事務所



⑫木更津県税事務所



⑬市原県税事務所



⑭自動車税事務所

