

黒潮は、房総沖に著しく接岸していました。水温は高め傾向です。

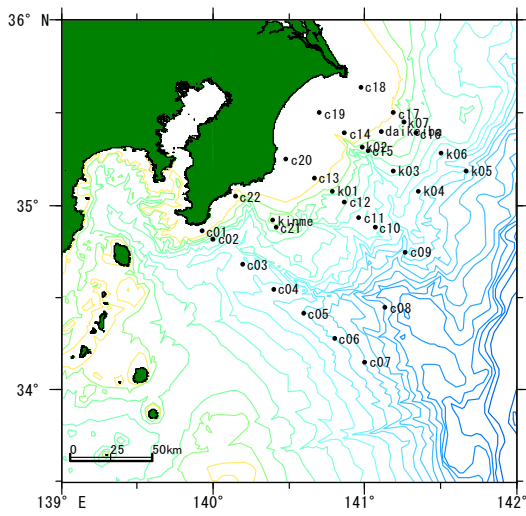


図1 調査点

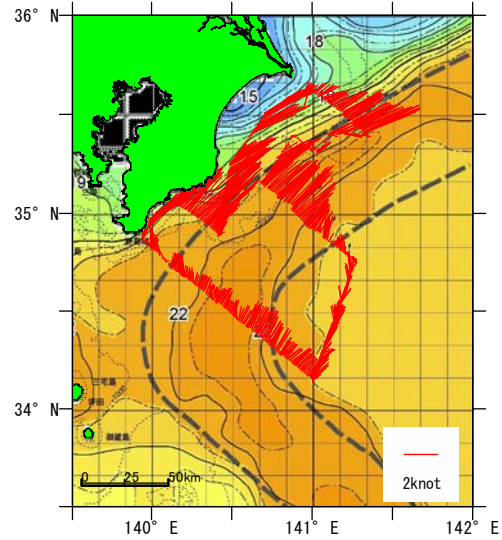
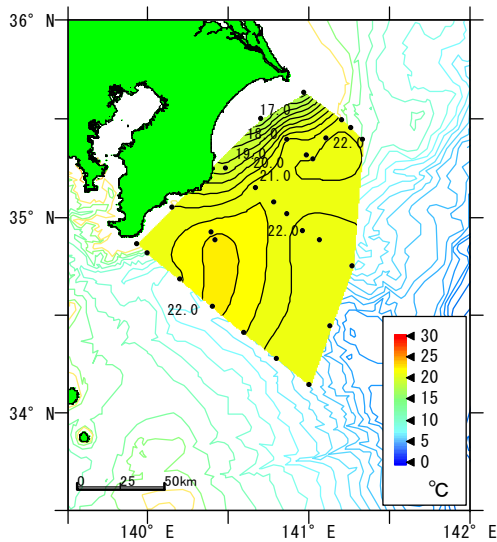
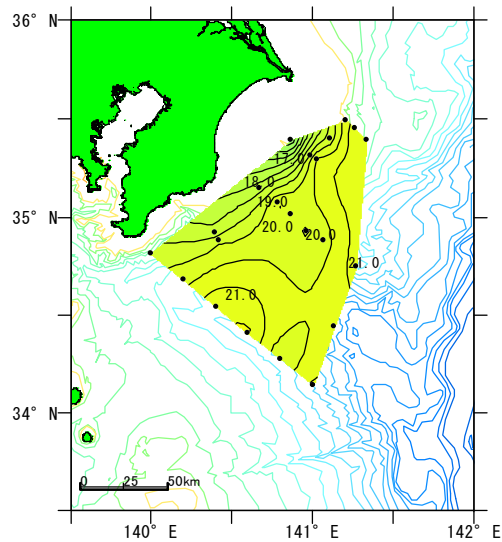


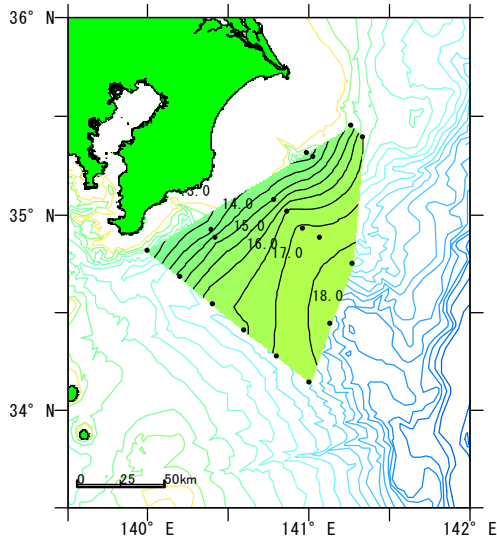
図2 観測時の黒潮流路と流れ



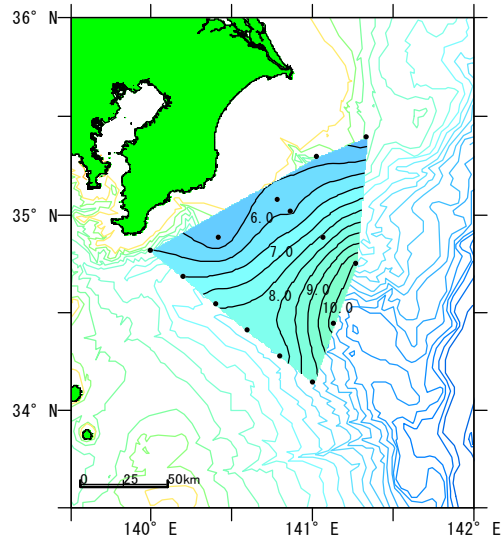
0m



100m



200m



500m

図3 水温水平分布

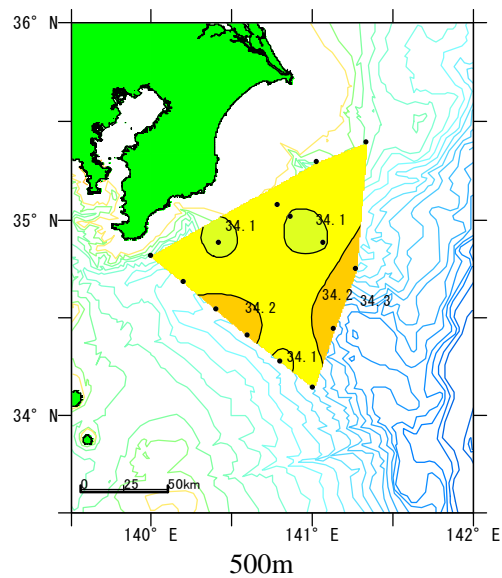
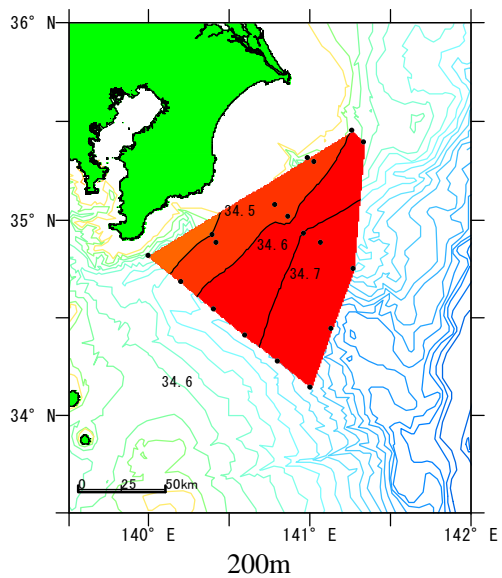
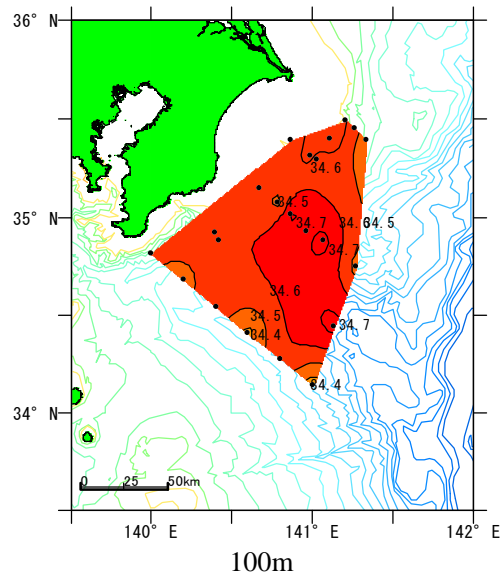
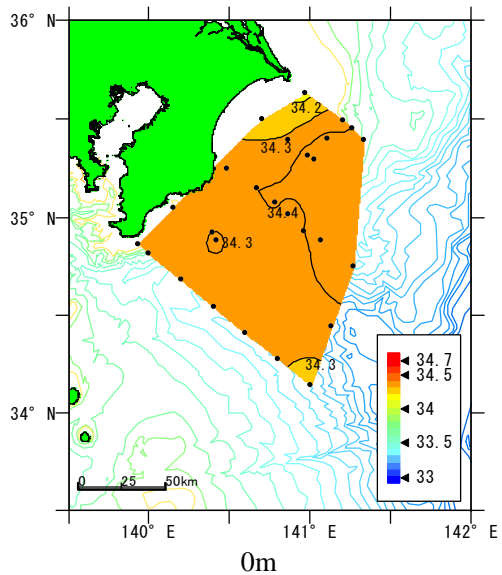


图4 盐分水平分布

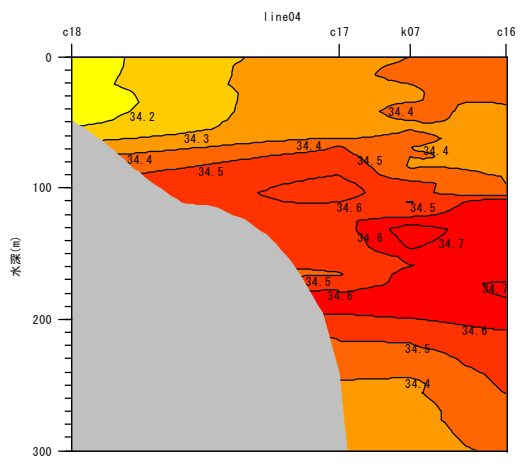
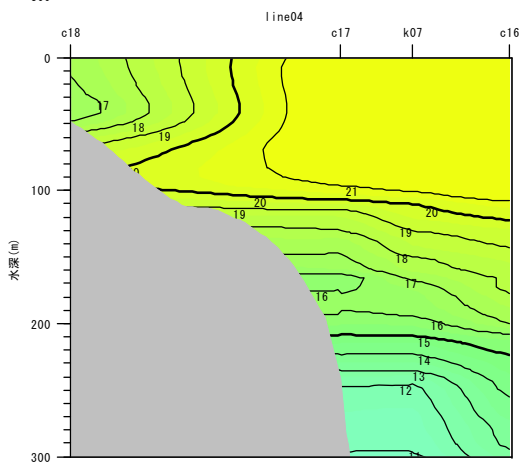
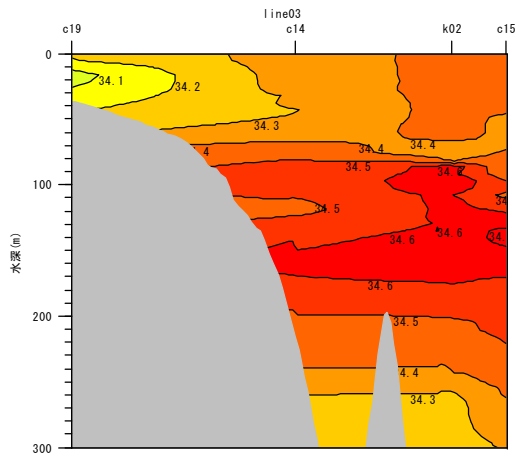
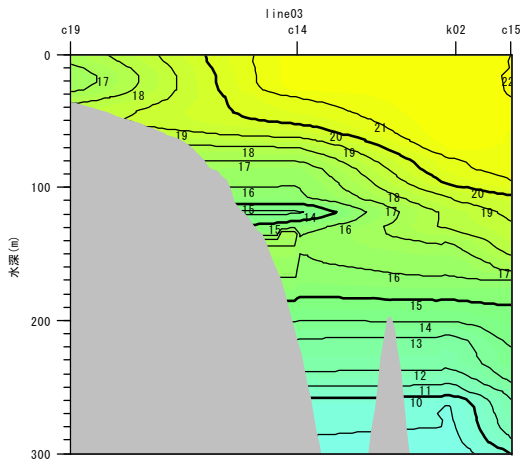
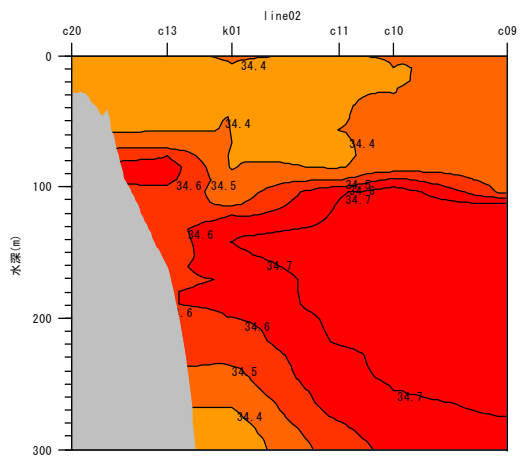
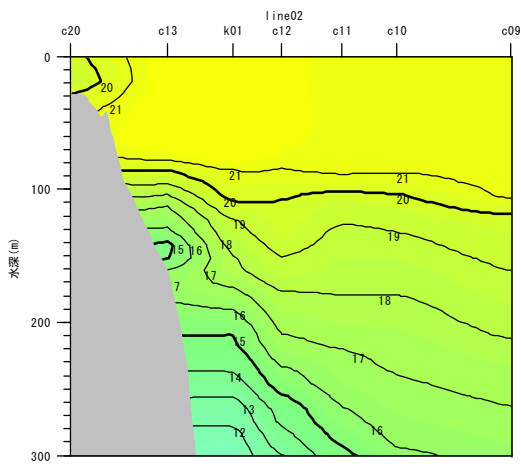
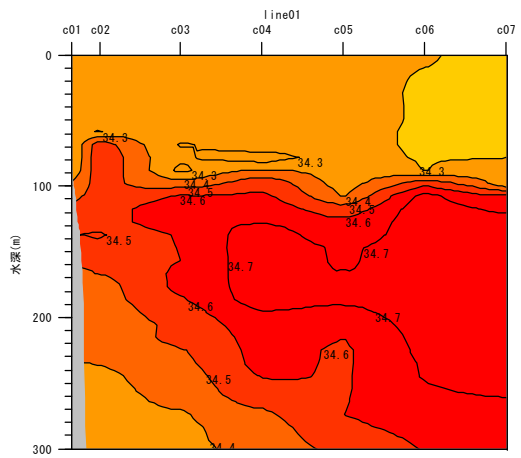
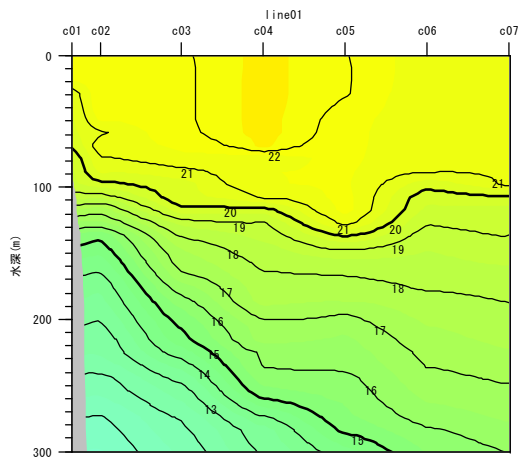


图5 水温鉛直分布

图6 塩分鉛直分布

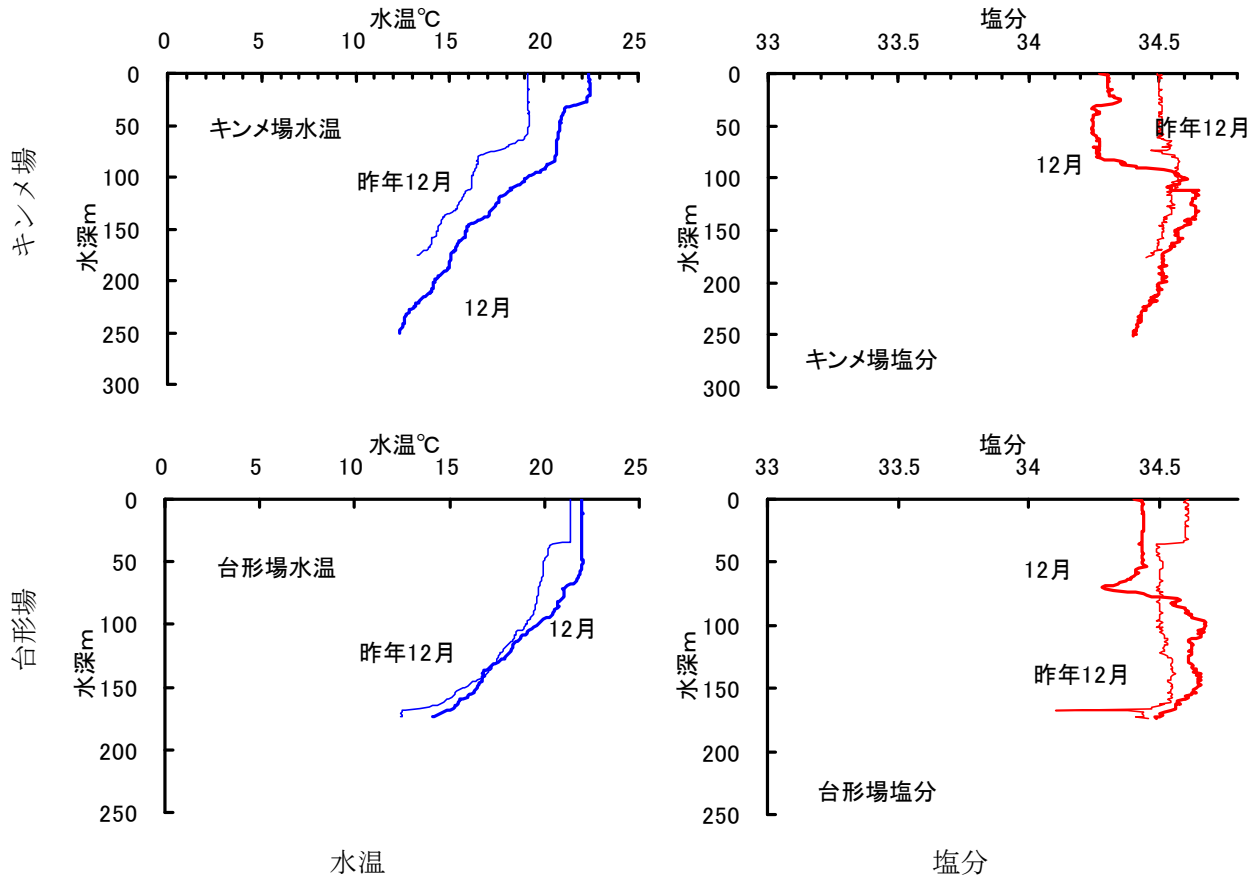


図7 キンメ場・台形場の水温・塩分鉛直分布

表1 海域別平均水温と評価		2008/12			
海域	0m	50m	100m	200m	
銚子・九十九里	20.1 やや高め	21.3 やや高め	20.0 高め	15.8 やや高め	
外房	21.7 高め	21.2 高め	19.7 やや高め	16.1 やや高め	

(資料) 関東・東海海況速報 (図2; 12月9日分)