

平成19年12月5~7日に房総丸で観測を実施しました。水温はやや高め~高めです。

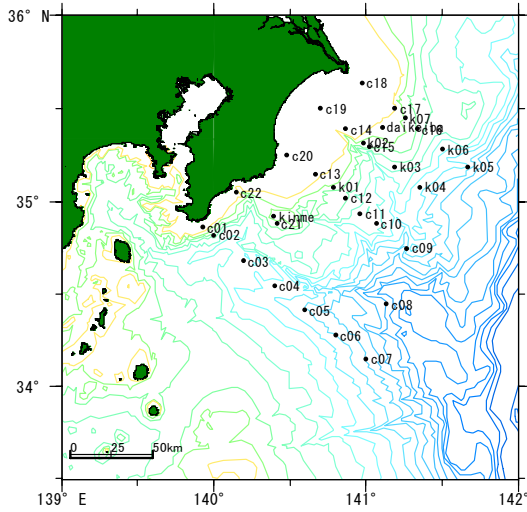


図1 調査点

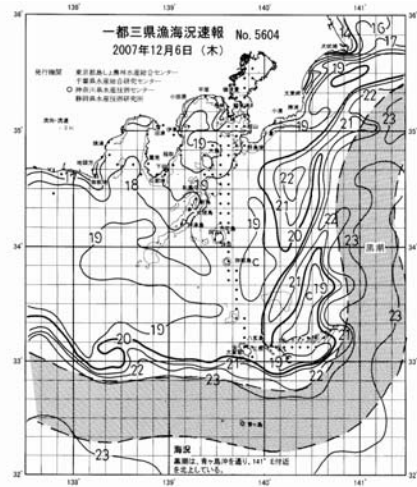
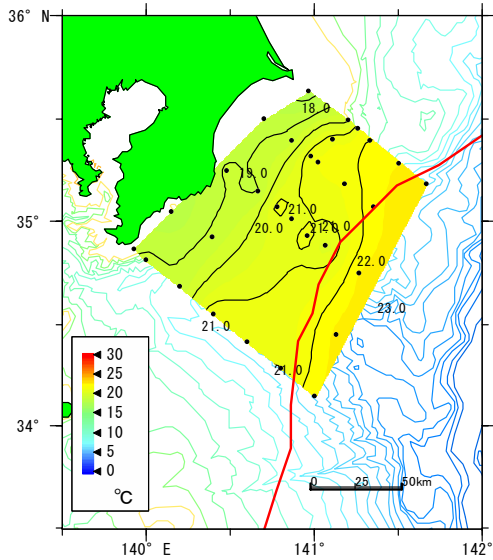
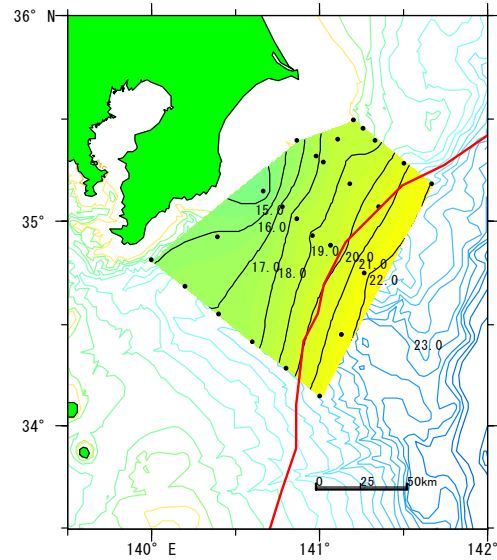


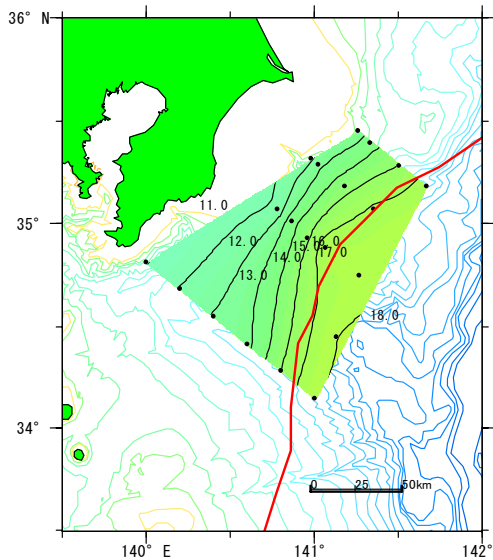
図2 観測時の黒潮流路



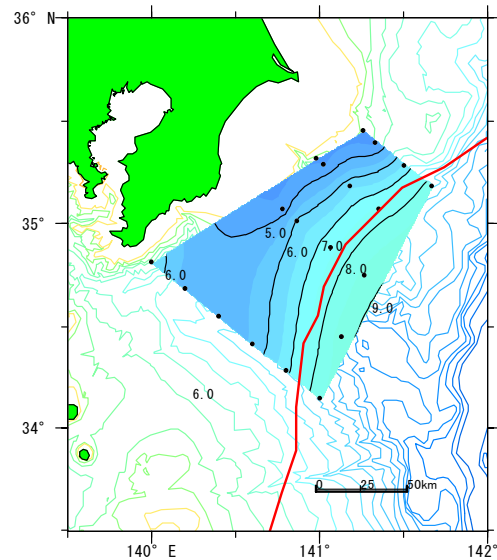
0m



100m



200m



500m

図3 水温水平分布 (赤線は黒潮流軸: 12月6日, MIRCデータ)

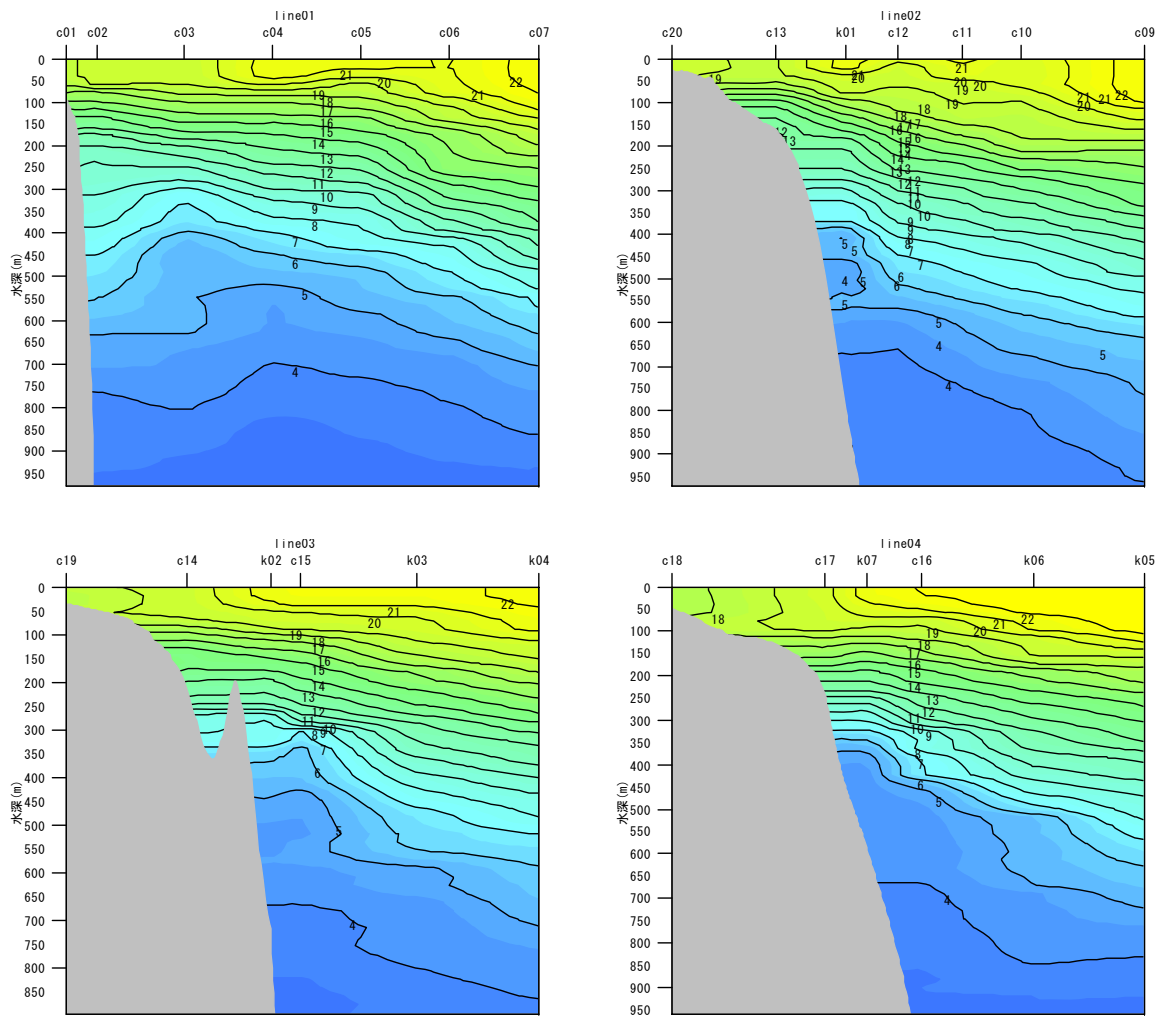


図4 鉛直分布

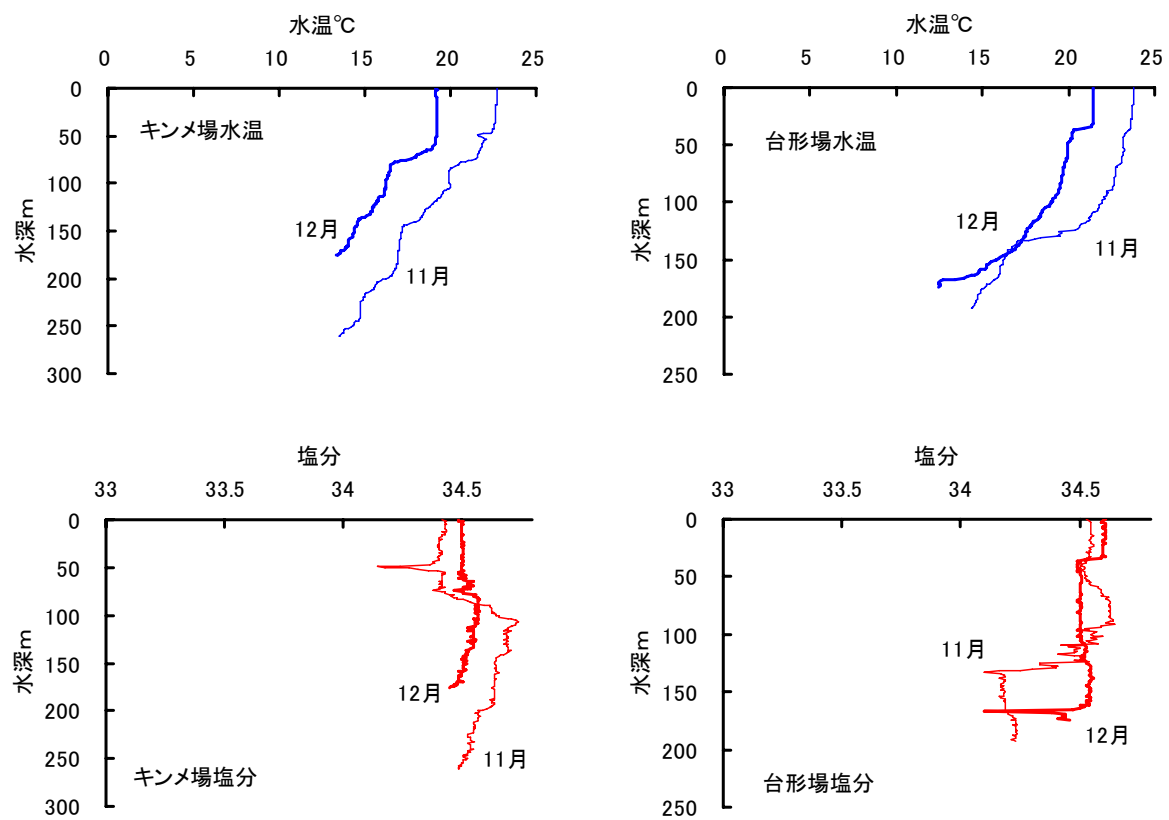


図5 キンメ場・台形場の水温・塩分鉛直分布