

We strive to provide every patient with the highest quality of cancer treatment and care

CHIBA CANCER CENTER

 CHIBA CANCER CENTER

Subtle Sophistication and Fine Attention to Detail: Our Brand of Cancer Therapy

The quality of our health care services is certified by the Japan Council for Quality Health Care (certification num. GB306).



Chiba Cancer Center is the premier cancer treatment facility in the prefecture of Chiba, and as a designated cancer hospital for cancer care, we strive to provide high-quality healthcare services.



Contents

Designated Cancer Care Hospital	2
High-Quality Cancer Care	4
Outpatient Care	8
Hospital Environment	10
Nursing	12
Palliative Care	14
Regional Medical Collaboration	15
Education and Training	16
Research	18
About Our Center, Numbers of Beds and Staff	20
Certifications and Our History	21

Mission Statement

Caring for the physical and mental health of cancer patients

Our Promises

1. We promise to provide you with high-quality care in a safe environment.
2. We explain in understandable way and promise you the autonomy.
3. We promise to improve the area of cancer treatment with the newest and most advanced medical technology and scientific research.
4. We promise with the utmost level of care and patience to educate and nurture the next generation of healthcare professionals.

Your Rights as a Patient

- Your rights and autonomy over your body will be protected regardless of your age.
- You all will receive the same high-quality care as a patient.
- You will be provided with detailed information about the course of your own medical care every step of the way.
- You will receive detailed explanations of your options to help you decide your treatment options here in our center.
- You will not be denied the request for your own medical records.
- You are always entitled to a second opinion.
- Your privacy information will be protected.
- You have the right to express grievances about your care or our hospital.

Requests from Our Staff

- Please let our staff know your medical conditions precisely.
- Please follow rules and regulations set forth by our facilities.
- Please respect and avoid disturbing other patients.
- Please follow safety instructions to prevent accidents.
- We are a public organization and your medical fees keep the hospital running; please try to pay your fees in a timely fashion to ensure that we can continue to provide treatment to everyone.
- Please strive to participate in clinical research, should the opportunity arise, so we can continue to make improvements to diagnosis and treatment in the future.
- Quality cancer care relies on quality healthcare professionals; please strive to participate in medical education and training should the opportunity arise so we can continue to train the best cancer treatment professionals for you.

From the Director of
Chiba Cancer Center,
Iizasa Toshihiko



On October 10th of 2020, we commemorated the completion of our latest addition, or rather, a new beginning, of Chiba Cancer Center. Esteemed guests such as Governor Morita, members of the National Diet and Chiba Prefectural Assembly and representatives from Chiba University and the Japanese Association of Clinical Cancer Centers joined us, while taking all possible preventative measures to avoid the spread of COVID-19, to mark an important milestone for our center. Since Chiba Cancer Center opened its doors in 1972, our center stood on these very grounds for 48 years. Despite the initial design being highly expandable and the hospital being a benchmark in cancer care over these years, concerns over earthquake resistance and aging plumbing led to the decision to break ground on the new hospital hall. Two weeks after the commemoration, on October 26, we again opened our doors, this time with a new hospital with one basement level and 9 above-ground floors. There are also plans for exterior and interior renovations for the older wings to house 450 beds within few years.

Cancer remains the leading cause of death in Chiba prefecture, and cancer care also remains a major issue for the lives and welfare for residents of Chiba. In the future, as cancer care becomes more streamlined across different facilities nationwide, we presume that at the same time there will be a shift towards providing more sophisticated and tailored courses of treatment for each patient. At Chiba Cancer Center, we are at the forefront working to provide new medical technology to you while continuing to uphold the most stringent standards of medical safety. We have recently received the distinction as a designated hospital for cancer care with a focus in cancer genomics, and have acquired two surgical support robots to be able to perform more operations with higher precision, great safety at minimal invasiveness. While striving to reduce burden on the body, we are also actively introducing and performing highly complicated operations and pioneering groundbreaking therapeutic methods for our patients. For radiation therapy, we have implemented the latest IMRT (Intensity Modulated Radiotherapy) techniques; as the prognosis of cancer drug therapy improves with the advent of targeted molecular therapies and immune checkpoint inhibitors, we have established an outpatient cancer drug therapy center to improve patient experience. Additionally, in response to requests from a number of Chiba residents, we have also added a facility for hyperthermia therapy. We believe that the addition of these new instrument upgrades and the expansion of our palliative care system, we can provide even more comprehensive cancer care to those in need in Chiba. As the leading institution and the designated hospital for cancer care in the prefecture of Chiba, we strive to continue providing you with the best cancer care environment you need. To do so, we will continue to listen to your voices as guidance in fulfilling this grand mission of eradicating cancer, and appreciate your deep understanding and warm support.

Designated cancer hospital

We work to provide you the highest quality of cancer care, for your mind and body.



Cancer Consulting and Support Center

We offer a safe place for your questions and answers on everything about cancer, whether it be technical questions about the specific cancers, financial concerns or even unease about handling the disease, from certified cancer counseling specialists with a variety of technical backgrounds such as nursing, medical social work and peer counselors with a breadth of knowledge on cancer.

Second Opinion Center

The Second Opinion Center provides you with support such as referrals or coordinating transfers to other facilities, should you wish to seek the expertise of other oncologists outside our center.

Patient's Salon & Nitona Library

Cancer therapy is a difficult journey, and at times you and your loved ones may feel overwhelmed and alone from insecurities about the future. Our Patient's Salon provides a comfortable environment for patients and their families to talk and express themselves, as a mechanism of coping and communication, and we have a staffed Nitona Library with a collection of cancer-related literature for you and your loved ones to learn about the disease and obtain useful information that may aid you on the path to recovery.



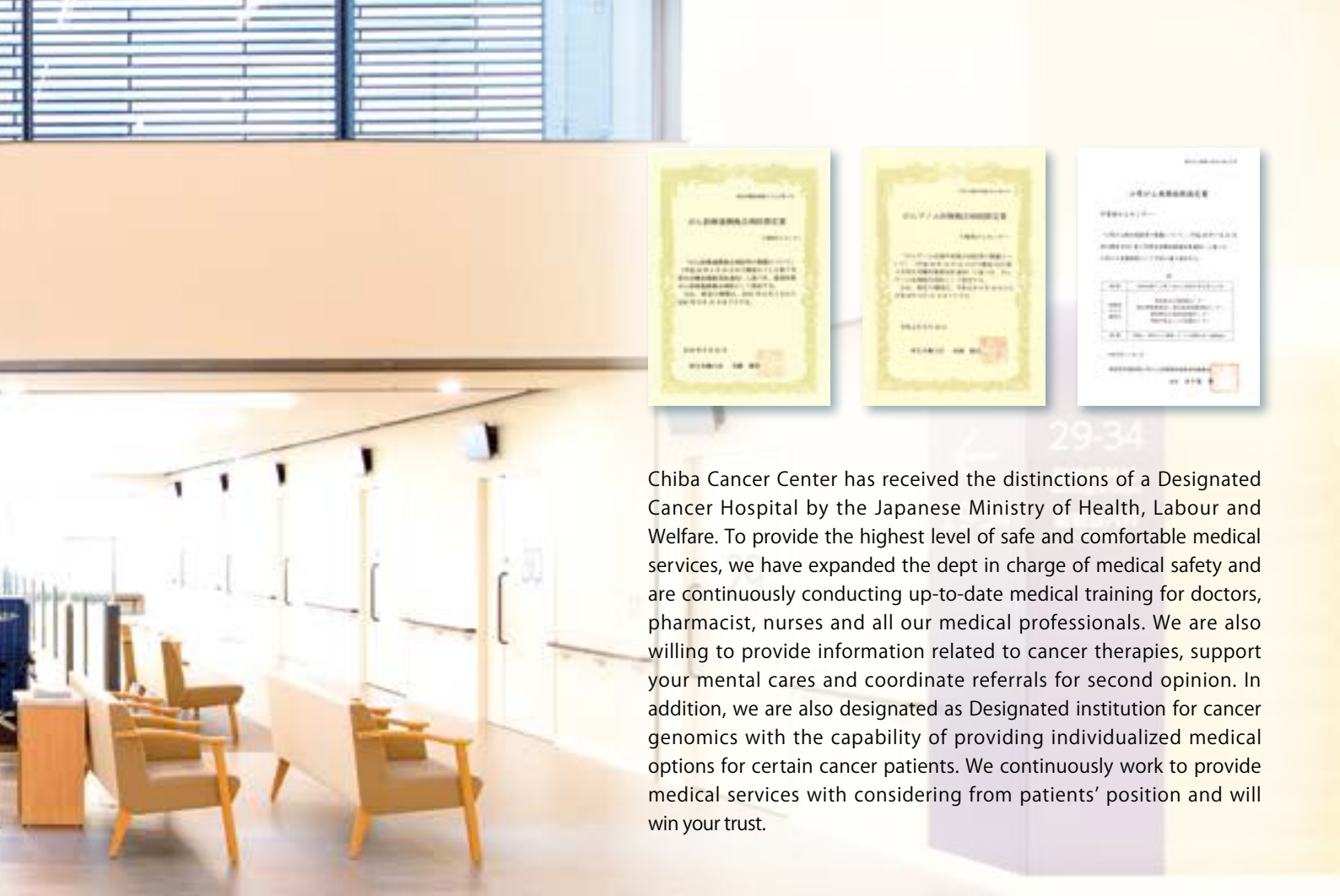
Cancer Consulting and Support Center



Patient's Salon & Nitona Library

Palliative Care Center

Our Palliative Care Center, now consisting of team-based palliative care staffs and both in- and out-patient services, provides support for patients and their loved ones with the aim of elevating their quality of life, with options such as pain management, insomnia therapy and counseling for a peace of mind and body.



Chiba Cancer Center has received the distinctions of a Designated Cancer Hospital by the Japanese Ministry of Health, Labour and Welfare. To provide the highest level of safe and comfortable medical services, we have expanded the dept in charge of medical safety and are continuously conducting up-to-date medical training for doctors, pharmacist, nurses and all our medical professionals. We are also willing to provide information related to cancer therapies, support your mental cares and coordinate referrals for second opinion. In addition, we are also designated as Designated institution for cancer genomics with the capability of providing individualized medical options for certain cancer patients. We continuously work to provide medical services with considering from patients' position and will win your trust.

Our Departments

Our medical departments are specialized to respective organs to provide you with high quality of care.

Primary Departments

- Esophago-Gastrointestinal Surgery
- Hepatobiliary Pancreatic Surgery
- Gastroenterology
- Breast Surgery
- Thoracic Surgery
- Respiratory Medicine
- Cardiology
- Hematology and Medical Oncology
- Head and Neck Surgery
- Neurological Surgery
- Gynecology
- Urology
- Orthopaedic Surgery
- Plastic Surgery
- Medical Genetics
- Palliative Care
- Psycho-Oncology
- Dentistry
- Dermatology

Supporting Departments

- Diagnostic Imaging
- Endoscopy Center
- Radiation Therapy
- Nuclear Medicine Unit
- Cancer Chemotherapy Unit
- Blood Transfusion Therapy
- Anesthesiology and Surgical Management
- Intensive Care Unit
- Laboratory Medicine
- Pathology
- Medical Genetics
- Pharmacy
- Dept. of Infection Control
- Rehabilitation
- Division of Nutrition Counseling
- Nursing Care

Interdisciplinary and Collaborative Departments

- Office of Medical Care and Safety Management
- Office of Strategic Management
- Clinical Trial Research Center
- Support Center for Cancer Patients
- Office of Regional Medical Collaboration
- Office of Inpatient Admission and Discharge
- Cancer Counseling Support Center
- Second Opinion Center
- Palliative Care Center
- Prostate Center
- Breast Center
- Sarcoma Center
- Nutritional Support Team
- Infection Control Team
- Bedsore Prevention Team

Research Institute

- Division of Cancer Genetics
- Division of Molecular Carcinogenesis
- Division of Oncogenomics
- Division of Cancer Prevention and Epidemiology

Administration

- Secretarial Division
- Office of Medical Affairs

High-quality cancer care

Our center utilizes the latest medical instrumentation and up-to-date therapeutic treatments and procedures.

Surgical Operation Support Robot s

Minimally invasive surgery is a treatment way that reduces the burden on the body for the patients by minimize wound sizes from surgeries, lower the risk of complications, and speed up post-operative recovery. At our center we deploy two Da Vinci surgical support robots that allow us to perform minimally invasive surgery, and employ to urological, esophageal, gastrointestinal, gynecological and respiratory surgeries.



Office of Medical Care and Safety Management

The department, consists of physician, pharmacist and nurse, manages medical safety in our hospital. We examine staff reports and make improvements to prevent accidents from occurring and to assure a safer environment in every part of our hospital for patients.



Anesthesiology and Surgical Management

Our department is staffed with 3 full-time anesthesiologists, certified by the Japanese Society of Anesthesiologists (JSA Qualified Anesthesiologist, JSA Board Certified Anesthesiologist and Fellow of JSA) and also certified by the Japanese Medical Specialty Board, and 29 rotating anesthesiologists to manage general anesthesia during operations. These patients are then transferred to the Intensive Care Unit for post-operative treatment in a safe and monitored environment.



Intensity Modulated Radiation Therapy (IMRT)

By altering the radiation dose (intensity) according to the complex tumor geometry, IMRT can reduce side effects by minimizing exposure to adjacent tissues and organs to improve your treatment experience.



Angio-CT systems

We have implemented one of the world's first Angio-CT systems. Our state-of-the-art imaging system can generate three-dimensional tomographic images along with real-time fluoroscopic projection to give us the capability of 4D intervention. The system can also be used separately.



Diagnostic Imaging Unit

Experienced imaging specialists use state-of-the-art instruments such as CT and MRI to image the inside of the human body for diagnosis to initiate treatment and monitor progress. Among all prefectural hospitals, our center is the only facility to have a team of full-time radiologists on staff. In addition to diagnosis, this department is also in charge of treatment by angiography-based interventional radiology.



Nuclear Medicine Unit

The Nuclear Medicine Department performs diagnosis by positron emission (PET) and computed tomography (CT) as well as gamma (scintillation) cameras. Under the use of contrasting agents such as FDG, PET/CT visualizes tumor figures and its activities. Gamma camera performs a wide range of tests to detect tumors and evaluate organ function.



Radiation Therapy Unit

We use intensity-modulated radiotherapy (IMRT) and stereotactic radiotherapy (SRT) for treating cancers. Upon the latest expansion, this department is now equipped with two additional latest model linear particle accelerators (TrueBeam and Halcyon from Varian Medical Systems), along with the existing TrueBeam system to provide high-precision radiotherapy.



Endoscopy Center

Our personnel in endoscopy and gastroenterology work together to provide gastrointestinal endoscopy diagnosis and treatment. We aim for high-precision diagnosis and early screening using the latest devices for image-enhanced observation and magnified observation, and our oncologists perform minimally invasive endoscopic submucosal dissection with great nationwide distinctions.



Clinical Trial Research Center

Clinical research is an important aspect here at Chiba Cancer Center. In the past, our physicians individually sought and conducted clinical trials, but since 2010 we have established a department to carry out centralized organizational support, and which our physicians have found to be indispensable for contracting and conducting clinical trials. This department has now grown to include 30 staff members who assist in the management of over 200 clinical trials, and is one of the leading clinical research support departments in Japan.



Cancer Chemotherapy Center

Cancer chemotherapy is markedly advancing with increasing number of new drugs including molecular-targeted drugs. Our center prides ourselves in the adaptation of the latest approved chemotherapeutic agents on the market, and consistently produce results and success in chemotherapy among the best cancer facilities in Japan.



Division of Nutrition Counseling

The Department of Nutrition provides inpatient and outpatient consultation on diets after surgery or in response to effects of chemotherapy and radiation therapy. Our registered dietitians make personal visits to our inpatient wards to provide meal consultation so that patients enjoy their delicious and nutritious meals during their stay in our center.



Blood Transfusion Therapy Unit

Since 2017, Blood Transfusion Therapy Unit began to operate as an independent department to perform transfusion therapy that adhere to guidelines established by the Ministry of Health, Labor and Welfare for safe and high-quality transfusion medicine. We have introduced a fully automatic blood transfusion test system and a computer cross-matching system to quickly prepare compatible blood products while paying close attention to prevent blood transfusion accidents.



Pharmacy

To ensure that patients receive safe and advanced medication, we assign dedicated pharmacists for each ward and the chemotherapy center to provide guidance about the medication patients receive, check for, explain and provide measures to minimize possible side effects. Compounding injectable drugs used in in-and-out patient services are performed by pharmacists in sterile environments.



Dept. of Infection Control

We have organized an infection control team consisting of physicians, nurses, pharmacists, and clinical laboratory technicians with specialized qualifications to prevent and respond to outbreaks of nosocomial infections such as drug-resistant bacteria as necessary. We also work to promote the proper use of antibiotics and educate patients who have become immunocompromised to these drug-resistant pathogens as a result of their cancer treatment.



Pathology

Our department has five pathologists on staff for analyzing histopathological diagnosis that eventually becomes the basis of cancer treatment, and the staff pathologists work in pairs to ensure that all diagnoses are accurate and free of human errors. Following advances in cancer genetics, we have also incorporated analytical methods in gene translocation by FISH and PCR as well as PCR-based lymphoma clonality analysis to help oncologists tailor a patient's course of therapy.



Rehabilitation

The rehabilitation department offers physical therapy for cerebrovascular, locomotor and cancer rehabilitation. We tailor therapies to individual patients to ensure that they maintain sufficient physical strength before surgery, recovery of postoperative function, and palliative relaxation. The department periodically offers other soothing sessions such as music therapy and animal therapy.



Laboratory Medicine

Our department operates through a thorough and systematic platform to produce patients and physicians the most accurate test results. With our specialized instruments, we can promptly perform a large number of biochemical examinations such as the amount of certain types of cells present as well as a number of markers such as particular types of proteins and enzymes from a single blood specimen. Additionally, we are also equipped with genetic testing methods to characterize the presence of bacterial pathogens of infectious diseases.



Medical Genetics

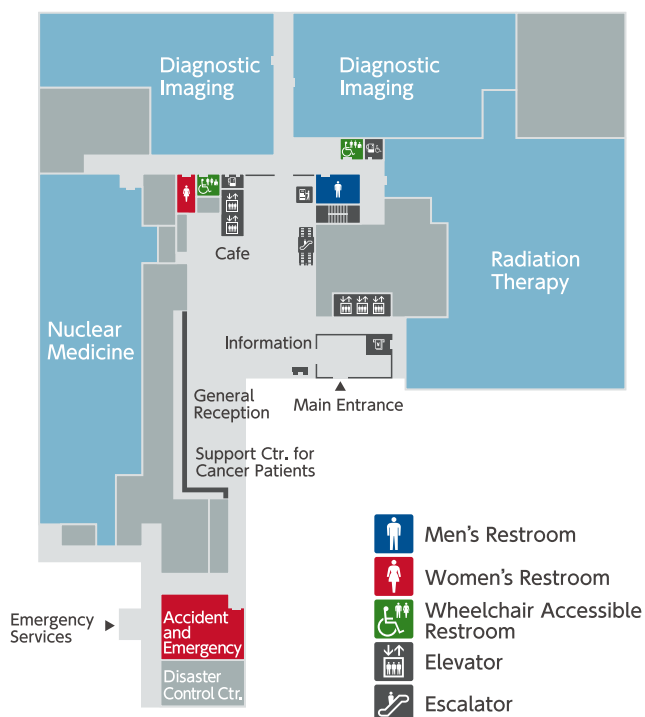
As the heart of our focus on cancer genomics, the Medical Genetics department performs next-generation sequencing by examining oncogene panels, DNA methylation and PCR analysis, and bioinformatics analysis of genome information to decipher mutations for diagnosis and helping you personalize your treatment options based on your genetic makeup. We analyze blood specimens to diagnose hereditary cancers and provide information on appropriate checkup and prevention methods for patients and family members of risks to hereditary cancers.

Outpatient care

On the first floor, we will examine, test, diagnose and aim for determination of the therapy direction in one day.



1F



After you pass through the brightly lit open-space entrance, you will find the reception desk with our Support Center for Cancer Patients for one-stop concierge services for you and your family members. On the same floor you will also find departments of Diagnostic Imaging, Radiation Therapy and Nuclear Medicine that are essential for diagnosis and treatment for both outpatient and inpatient services.



First Floor, Main Hall
Emergency Services



First Floor, Main Hall
General Reception, Registration Desk of Accounting,
Registration Desk of New Patients



First Floor, Main Hall
Cafe



2F



On the second floor, outpatient clinics for all our departments and other sections such as Endoscopy Center, Cancer Chemotherapy Center and Laboratory Medicine are gathered to form the central part of outpatient care. In addition to dining spaces, you will also find a convenience store, break area and our Patient's Salon and Nitona Library.



Second Floor, Main Hall
Outpatient Services/Waiting Area



Second Floor, Main Hall
Restaurant



Second Floor, Main Hall
Convenience Store



3F



On the third floor, our operation room along with the Intensive Care Unit and ME room are situated. The operation room is equipped with a new hyperthermia treatment area to broaden treatment options for certain types of cancer. In the large and bright Rehabilitation room, we provide physical, occupational and speech rehabilitation therapies as well as music therapy.



Our sterile ward is equipped with 20 beds and specialized air purification system to ensure that your chemotherapy treatments and hematopoietic stem cell transplantation procedures are performed in a safe environment free of infectious pathogens.



All of our wards at 5th to 9th floor have brightly lit and spacious lounges for patients to relax in.

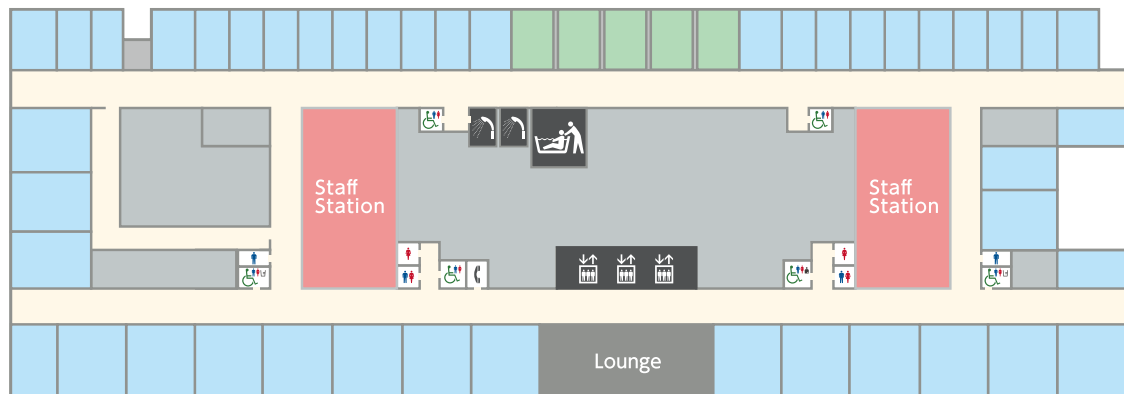
Hospital environment

We provide high-quality and relaxing cancer care environment with placing a high priority on safe and comfortable medication.

5F - 9F

■ Patient Rooms ■ Meeting Rooms

6th Floor Schematics as Shown



-  Men's Restroom
  Elevator
-  Women's Restroom
  Showers
-  Wheelchair Accessible Restroom
  Special Assistance Bathing Room



Ninth Floor, Special Rooms

Our fifth to ninth floors are separated by different wards for inpatient services along with other specialized facilities such as Sterile Ward (5F), RI Ward (6F), Palliative Care Ward (7F) and special rooms on the top floor (9F). Every floor also has an open-space lounge area. Single rooms are equipped with large and wide windows for lighting along with a shower and toilet, as well as an "intelligent bed" system designed to provide ergonomic comfort and track vitals for easy access.

Nursing

The safe and comforting medical care you receive comes hand-in-hand with dependable support provided by our finest nursing staff.



Adhering to our mission of “caring for the physical and mental health of cancer patients”, our nursing staff of experience and expertise provides you with kindness, dependable and heartwarming care to help you overcome anxiety and uncertainty and pain while you are in our hands.



Ethos of the Nursing Staff

We hold dear the pain you suffer from cancer, and promise to support your care here with the following four points.

1

Nurture your desire and will to overcome

We will try our best to care for and encourage our patients to fight for the will to overcome their ailments with positivity.

2

Respect the decisions you make

We respect your autonomy and will respect your own and family's decisions about your own treatment.

3

Drive to improve your QOL

Everything we do seeks to minimize the pain, suffering and anxieties you or your family may have during your course of treatment.

4

It is human nature to love and care

We will provide care with rich humanity, in which expertized techniques and respect of life are harmonized.



About Our Nursing Staff

1

Seven to One

We strive to maintain a 7-to-1 patient-nursing staff ratio in all of our wards to offer extensive and comfortable coverage at all times for our patients.

2

Primary-Support System

Every patient is assigned a primary caregiver who works with other support nursing staff members to account for needs of the patient and family to create a care plan during their stay.

3

Managed Early Alleviation

Our nursing staff are trained to provide early palliative treatments for various conditions such as pain and insomnia, hunger, nausea, and anxiety to alleviate patient and their loved ones' pain during the initial stage of their care.

4

Going Home

Should you opt for at-home care, our nursing staff will communicate with you, and your family and the regional visiting care facilities near your home to ensure that patients will receive the necessary medical care in the comfort of their own home.

5

Adequate Training of Staff

We ensure that our new nursing staff, staff divided by age groups, nursing assistants and clerical staff are all extensively trained. We have an educational system that allows newcomers to veterans to "step up" in their career to acquire and improve their knowledge and skills.

6

Activities of Expert Nurses

Our expert nurses are assigned to respective team specialized to nutrition, pressure ulcers and palliative care to provide direct patient care and educate all of our staff with knowledge expertise to cancer care throughout different divisions in our center.



Palliative care

Whether it be pain, trouble breathing or insomnia, we will try our best to resolve it for you.

Utilization of proper palliative at the early stages of cancer treatment can improve outcome and even affect prognosis. The Palliative Care Center takes unrestricted emergency readmission policies to provide you a supportive and comfortable environment here and at your own home with our extensive experience and expansive contacts with at-home care providers. We provide palliative care with respecting you and your family's intention.



Our therapists and fellows hold music therapy sessions regularly to improve you and your family's QOL.



The palliative care center works to control the progression of the disease, support your rehabilitation, and organize collaboration with your regional medical services to ensure your at-home care.



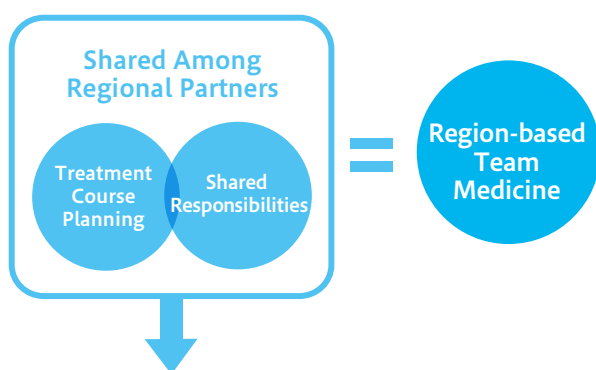
Regional Medical Collaboration

Expanding the network to support patients with our regional partners.

Promotion of “Region-based Team Medicine”

Chiba Cancer Center works to establish a network to support cancer patients with regional partner facilities. We aim to structure a regional collaboration system to ensure the same quality of treatment for patients by coordinating and balancing medical procedures with those partners as “a regional medication team”. Our office of Regional Medical Collaboration acts as the managing liaison to establish such medical facility networks and improve those qualities.

“Regional Collaboration Critical Path”



Patient Discussion and Action

Regional Collaboration Critical Path

As a tool to provide safe, reassuring and high quality of care in Region-based Team Medicine, we have developed and promoted an idea we call “Regional Collaboration Critical Path.” We design and conduct collaborative treatment plans through joint discussions with participating regional partners. The staff in our office of Regional Medical Collaboration serve as the “Regional Collaboration Manager” to support and coordinate your treatment plan.

Roles of a Regional Collaboration Coordinator

Outpatient nursing staff serve as Regional Collaboration Coordinators in our center. At the beginning of your Regional Collaboration Critical Path, those coordinators for your understanding and agreement. Your coordinator will explain and answer questions about the design of your collaborative treatment plan and help you select regional partner facilities. Should anything happen during your visits at those partner facilities, these coordinators will also be able to provide readmission support to continue your treatment under our direct care.

Education and Training

We aspire to educate and nurture the high level medical personnel



Nursing Care Practical Training(suctioning)



Physical Assessment



Nursing Care Practical Training(blood collection)



Nursing Care Practical Training(infusion management)

We here at Chiba Cancer Center periodically hold specialized workshops and study groups for our staff to ensure that everyone is up-to-date in techniques and knowledges in each medical domain. For our staff, we actively conduct hands-on training sessions in a variety of overseas locations in the United States and other countries. To prepare our next-generation healthcare professionals, we accept internships for the purpose of postgraduate clinical training and oncologist qualifications, as well as student trainees from a number of healthcare-related degree programs. We actively guide graduate students seeking a career in medical research via the “Department of Molecular Biology and Oncology” program with the Graduate School of Chiba University School of Medicine. Our education and training activities are not only limited to researchers and healthcare professionals, either. Every year Chiba Cancer Center Research Institute invites junior high and high school students living in Chiba to our “Chiba Yume (Dream) Challenge” and Japan Society for the Promotion of Science-sponsored “Hirameki Tokimeki Science” events to inspire them to develop interests in science and medicine, and motivate them to join our

healthcare community. Chiba Cancer Center also holds seminars and cancer prevention exhibits in community outreach events to invite patients and residents of Chiba to learn about cancer.

Our nursing care department aspires to incubate and nurture the best cancer care nursing personnel via a vertical multi-stage system “Clinical Ladder” to guide our nursing staff every step of the way from trainees to team leaders, senior levels and certified nursing specialists. Our multi-stage OJT education and training system allows our staff to accumulate experience in all aspects of nursing care in a “learning by doing” model, and inspire them to develop their own careers in the field of cancer nursing care. We also conduct on-site tours and training sessions for persons from other facilities, training for specialized- or certified-nurse curriculum, practical training for nursing students, hands-on work experience tours for junior high school students, etc. As a designated facility for cancer care here in Chiba, we continually hold a number of other education and training programs for nearby facilities, with the aim of improving the quality of nursing via active human resource development throughout prefecture of Chiba.



Summer Science School

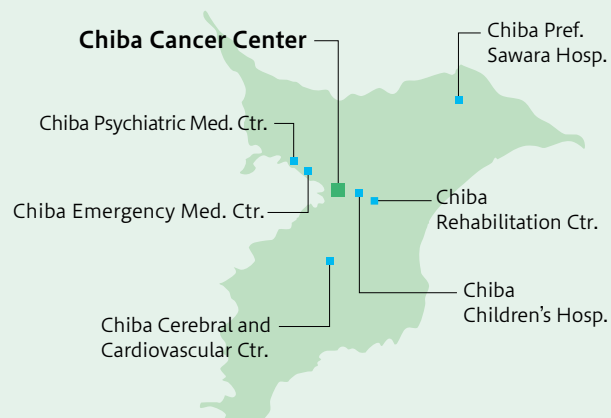
Clinical Education

While our center places priority on medical safety and aims to provide cancer therapies gentle to patient's body and mind, we also pride ourselves on the extensive education and training we provide to healthcare professionals such as oncologists, dentists, nursing staff, pharmacists, clinical technicians, physical and occupational therapists. Because of these training programs at our hospital, we periodically host a number of domestic and international students, medical residents and researchers in our center performing a variety of activities, and we ask for your understanding of the need for education and training these future cancer care professionals.

As the core facility among the prefectural hospitals in Chiba, the Chiba Cancer Center provides postgraduate residency training through the Postgraduate Clinical Training Program of Chiba Prefectural Hospitals. Please visit <https://www.pref.chiba.lg.jp/byouin/rinsho/index.html> for more information about the admissions process.

Postgraduate Training for Physicians

The Chiba Prefectural Hospitals unit consist Chiba Cancer Center, as the core facility, and multiple regional medical centers including other six-prefectural hospitals, Chiba East Hospital, JCHO Chiba Hospital as collaborating partners, as well as a number of other healthcare agencies and regional clinics.



Our Record as a Graduate Medical Education Program: By the Numbers

Since the beginning of the program in 2004, Chiba Prefectural Hospitals have hosted 191 medical school graduates in its postgraduate training program. After an initial stage of two years in general postgraduate medical training, the trainees enter a second stage as medical residents in the specialty they have selected.

# of trainee		2009	14	2015	8
2004	7	2010	11	2016	11
2005	15	2011	15	2017	13
2006	13	2012	8	2018	8
2007	7	2013	10	2019	12
2008	13	2014	13	2020	13

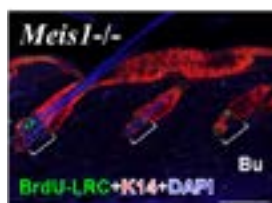
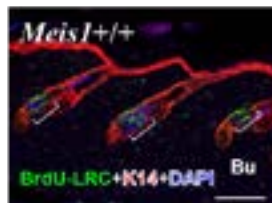


Research

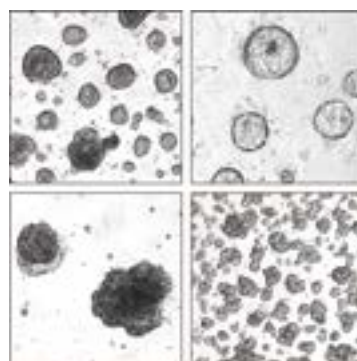
We perform cutting-edge research in cancer prevention, early screening, development of novel therapies and deliver the fruits of our research to the people of Chiba.



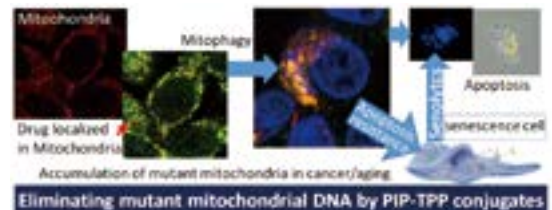
Chiba Cancer Center Research Institute consists of four main departments: Cancer Genetics, Molecular Carcinogenesis, Cancer Genome Center and Cancer Prevention Center, with a focus on advancing the state of cancer therapy and medicine. As part of the prefectural research centers of Chiba, we perform pioneering research and conduct region-wide epidemiological studies with the goal of promoting early screening, eradicating cancer and creating a platform of precision medicine for the residents of Chiba. In recent years, project in research areas such as drug development, early screening methods, tumor organoids, cancer immunotherapy, etc. have received financial support by various funding agencies such as the Japan Agency for Medical Research and Development. In addition to these key projects, we are also performing an array of other current projects in related fields such as cancer genome medicine, rare cancers, carcinogenesis of childhood cancers, mechanistic details of carcinogenesis, cancer stem cells, chemical genomic interference, liquid biopsy and regional cancer epidemiology with support from other funding sources.



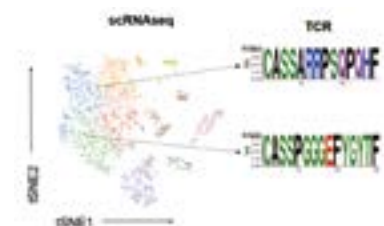
Genetic origin of skin cancers has a significant role in skin stem cells.



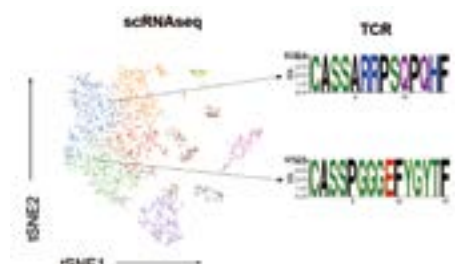
Organoids as new model systems for drug development.



Drug candidates that target genomic aberrations in mitochondria that may lead to cancer and senescence.



Targeted therapy candidates against mutant KRAS, a famous "driver gene" with constitutively active mutations.

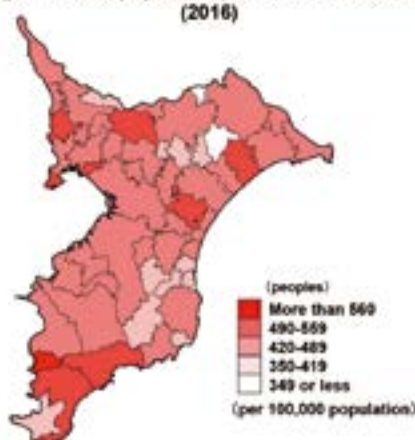


Elucidation of mechanistic details underlying cancer immunotherapy by single-cell methods.

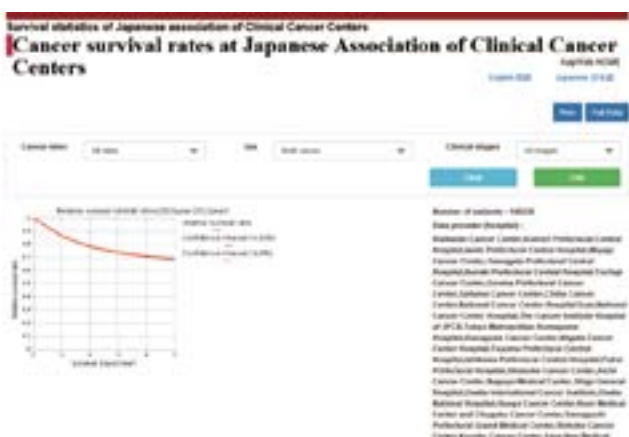
Five-year survival rates for cancer patients frequently exceed 70%.

We conduct epidemiological studies to understand the extent of cancer progression through the prefecture of Chiba, even before the enactment of a law establishing a nationwide cancer registry in 2016. We continue to conduct these surveys to monitor the progression of cancers in Chiba, and work hand-in-hand with other institutions in Japan to contribute to the nationwide cancer registry project to provide data that can be used to develop tools for screening and cancer prevention.

Distribution of Cancer Incidence (per 100,000 population) in Chiba Prefecture (2016)



To eradicate cancer for our future generations, we have been conducting regional molecular epidemiological studies in Inzai, Abiko, Kashiwa and Ichihara as part of the J-MICC as well as Chiba Cancer Center-City of Ichihara Molecular Epidemiology Cohort studies, with over 14,000 participants to-date.



Our KapWeb survival statistics database has compiled survival statistics using records of over half a million cancer patients across 32 specialized cancer treatment facilities in Japan, to provide physicians and the general public a transparent look into how cancer treatments affect prognosis in various different cancers.

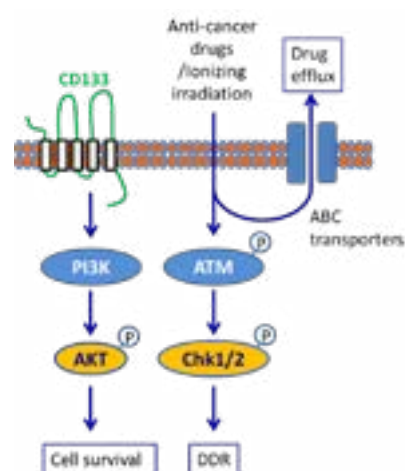
Aspiring graduate students tirelessly work towards the common goal of eradicating cancer.



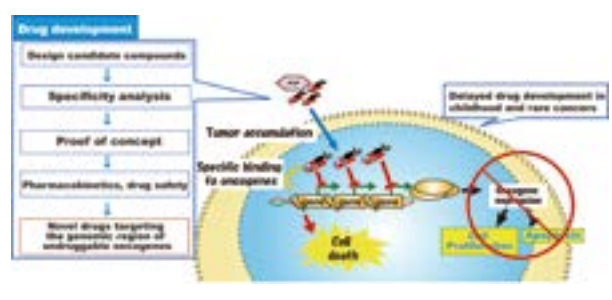
Chiba Cancer Center Research Institute through our collaboration program with Chiba University Graduate School of Medical and Pharmaceutical Sciences hosts a number of domestic and international graduate students in our center to perform clinical and bench-side medical research as part of their graduate requirements for their masters and doctoral degrees.



Upon informed consent, our BioBank collects and stores solid and liquid specimens for research in cancer therapy and diagnosis.



To combat the issue of chemo-resistance to cancer treatment, we are actively investigating the underlying mechanisms behind chemo-resistance in cancer stem cells in order to create the next generation of targeted cancer therapeutic candidates.



We are also investigating into new diagnostic and therapeutic options again a number of rare and undruggable cancers.

About Our Center, Numbers of Beds and Staff

Location	666-2 Nitona-cho, Chuo-ku, Chiba
Ground Area	59,228.55m ²
Floor Area	50,917.58m ² (as of Oct. 26, 2020)
Out-Patient Parking Lots	320

Beds	450	General 358 Intensive Care Unit 16 Non-Closed Source RI 3 Sterile 20 Palliative Care 53
Staff	542	Medical doctors 89 Nurses 316 Other staff 137

Floor Plan

				Wards	9F
				Wards	8F
				Wards	7F
				Wards	6F
				Wards	5F
		Med. Affairs & Nursing	Strategic Management Office of Medical Care and Safety Management Clinical Trial Res. Ctr.	Secretarial Div. Main Conference Hall	4F
		Medical Genetics Intensive Care Unit Pathology	Operation Rooms Hyperthermia Rehabilitation Rm. Blood Transfusion Therapy Main Examination Rm.		3F
2F	Walkway(2) (Planned to be constructed)	Walkway(1) ※	Endoscopy Ctr. Cancer Chemotherapy Unit	Waiting/Meeting Area(WMA) Patient's Salon/Nitona Library Shop Central Treatment Rm. Restaurant Physiological Exam. Blood Collection Rm.	2F
Palliative Care 1F			General Reception Nuclear Med. Support Ctr. for Cancer Patients	Diagnostic Imaging Cafe Radiation Therapy	1F
			Pharmacy	Bedding Receiving Medical Examiner's Office Laundry Nutrition	B1F

※The walkway connects to the first floor of the previous building. (This building is going to be renovated as a new research institute.)



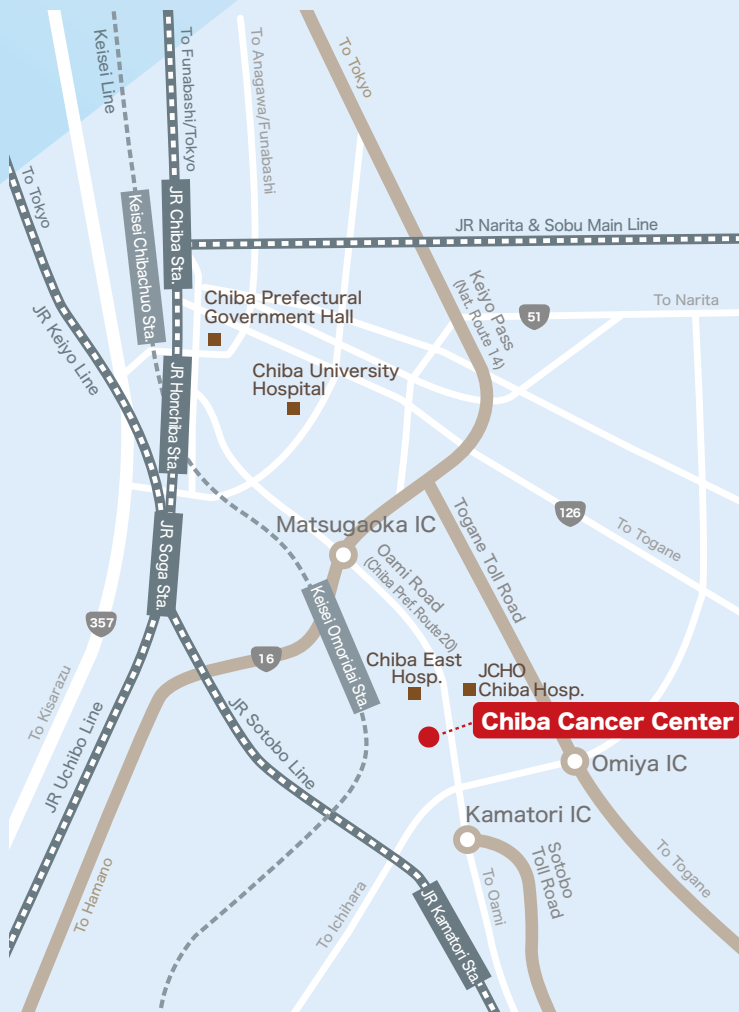
Certifications and Accreditations

1. The Japanese Society of Pathology
2. The Japan Neurosurgical Society
3. Japan Society of Anesthesiologists
4. The Japanese Society of Gastroenterological Surgery
5. Japanese Society for Parenteral and Enteral Nutrition (NST operation)
6. Japanese Society for Parenteral and Enteral Nutrition (training program for NST therapist)
7. Japan Society of Gynecologic Oncology
8. Japan Society of Obstetrics and Gynecology
9. The Japanese Orthopaedic Association
10. The Japanese Society of Gastroenterology
11. Japanese Society of Nuclear Medicine
12. The Japanese Board of General Thoracic Surgery
13. The Japanese Society of Clinical Cytology
14. Japanese Breast Cancer Society
15. The Japanese Respiratory Society
16. Japan Society for Surgical Infection
17. The Oto-Rhino-Laryngological Society of Japan
18. Japanese Society for Palliative Medicine
19. The Japanese Society of Internal Medicine
20. The Japanese Urological Association
21. The Japan Society for Respiratory Endoscopy
22. The Japan Esophageal Society
23. Japanese Society for Radiation Oncology
24. Japan Surgical Society
25. The Japan Society of Coloproctology
26. Japanese Society of Medical Oncology
27. The Japan Society of Transfusion Medicine and Cell Therapy (training program for clinical transfusion nurse)
28. Japanese Board of Cancer Therapy
29. Chiba Association of Medical Technologists
30. Japanese Society of Hematology
31. The Japan Society of Transfusion Medicine and Cell Therapy (training program for certified physician)
32. Japan Gastroenterological Endoscopy Society
33. Japan Radiological Society
34. Japan Society for Head and Neck Surgery
35. Japan Society of Plastic and Reconstructive Surgery
36. The Japan Society of Transfusion Medicine and Cell Therapy (accredited hospital)
37. Ministry of Health, Labour and Welfare (designated hospital for the advanced clinical training of foreign medical practitioners)
38. Ministry of Health, Labour and Welfare (designated hospital for the postgraduate clinical training)
39. Japan Council for Quality Health Care (3rdG:Ver.1.1)
40. The Japanese Society for Hereditary Tumors

History

Jan	1962	Recommendations received to establish a treatment facility for adult cancers from the Chiba Cancer Countermeasure Council
Sep	1969	Established the Office of Cancer Center for construction-related affairs in the Department of Health
Jan	1971	Construction began
Mar	1972	Construction for nursing staff housing completed
Jul	1972	Construction for hospital building completed
Nov	1972	Initial opening
Mar	1973	Construction for physician staff housing completed
Sep	1975	Nursing staff housing extension completed
Feb	1984	Plan for a comprehensive integration of cancer treatment submitted to the Chiba Cancer Countermeasure Council
Mar	1986	Response to Chiba Cancer Countermeasure Council's proposal for the comprehensive integration of cancer treatment in the prefecture of Chiba submitted
Jul	1991	Renovation for the East Wing
Jul	1991	New nursing staff housing completed
May	1993	Construction for new outpatient services building completed
May	1997	Network system for cancer care hospital information technology established
Apr	2006	Electronic chart system began operation
Aug	2006	Received designation as hub hospital for cancer care
Apr	2007	Received certification by the Japan Council for Quality Health Care
Oct	2009	Mutual collaborative agreement with the National Institute of Radiological Sciences signed
Apr	2011	Creation of three new divisions, "Mind-n-Body General Support Center", "Clinical Research Center" and "Prostrate Cancer Center"
Jul	2011	Began procedures using the "da Vinci" robotic assisted system
Nov	2013	Construction for administration and training annex completed
Oct	2017	Construction for the new hospital building began
Apr	2018	Received designation as Designated institution for genetic cancer medicine
Sep	2019	Received designation as MHLW hub hospital for cancer care with a focus in cancer genomics
Nov	2019	Received designation as a NCCHD collaborating hospital for childhood cancers
Oct	2020	Soft opening for the new hospital

Access



By Car

► From Tokyo/Funabashi area or Kisarazu/Tateyama area:

Via Keiyo Pass (Nat. Route 14), exit at Matsugaoka IC and head towards Oami on Oami Road (Chiba Pref. Route 20) for 2 km.

► From Oami area:

Via Sotobo Toll Road, exit at Kamatori IC and turn right on Oami Road (Chiba Pref. Route 20) towards Chiba for 1.5 km.

► From Togane area:

Via Togane Toll Road, exit at Omiya IC and follow the path on the right for 2 km and turn right on Oami Road (Chiba Pref. Route 20) and head towards Chiba for 1 km.

By Public Transportation

► From JR Chiba Station (East Exit Bus Area, Stop No. 2):

Board the Chiba-Chuo Bus for Honda-eki/Kamatori-eki/Chiba Rehabilitation Center/Omiya-danchi (via Hoshikukidai); deboard at Chiba Cancer Center (chibakengansenta, approximately 25 minutes)

► From JR Soga Station (East Exit Bus Area, Stop No. 3):

Board either the Chiba-Chuo Bus for Kamatori-eki, or the Kominato Bus for Chiba Cancer Center or Chiba Minami High School (chibaminamikoko); deboard at Chiba Cancer Center (chibakengansenta, approximately 16 minutes)

► From JR Kamatori Station (North Exit Bus Area, Stop No. 1):

Board the Chiba-Chuo Bus for Chiba-eki or Soga-eki; deboard at Chiba Cancer Center (chibakengansenta, approximately 13 minutes)



Photo taken from the northwest

For Patients

Office of Regional Medical Collaboration

043-263-4071 (Direct)

M-F 9:00-17:00 (except weekends and holidays)

General Inquiries

Cancer Consulting and Support Center

043-264-5431 (Main)

or

043-264-6801 (Direct)

M-F 9:00-17:00 (except weekends and holidays)

